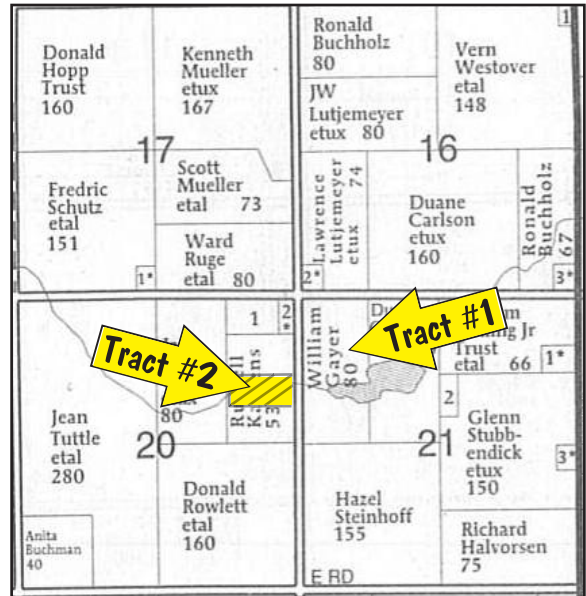


98.8 +/- ACRES
Otoe County Farm & Recreational Land

AUCTION

Friday, March 28, 2014

Fair Center, Otoe County Fair Grounds, Syracuse, NE
10:00 AM



TRACT #1: 80 ACRES +/-

Legal: 80 acres in the West 1/2 of the NW 1/4 of Sections 21, Township 9, Range 11, Otoe County, NE .
Location: 5 miles north of Syracuse on Hwy 50 to D Road then 3/4 of a mile West on d Road on south side.
Taxes: 2013 taxes \$2044.48. 2014 taxes to be paid by buyer.
ASCS: 45.01 acres of crop ground, balance in lake, water ways and road.
 Property is excellent for good fishing, duck, goose & turkey hunting

TRACT #2: 18.9 ACRES +/-

Legal: 18.9 acres in east 1/2 of NE 1/4 of Section 20, Township 9, Range 11, Otoe County, NE.
Location: 5 miles north of Syracuse, NE on Hwy 50 to D Road then 1 mile west on D road and 1/4 mile south of west side of the county road.
Taxes: 2013 taxes are \$279.70. 2014 taxes to be paid by the buyer.
ASCS: 10.69 acres of crop ground, balance in water pool, water ways and road.
TERMS: \$20,000 down on Tract #1 and \$4,000 down on Tract #2 day of auction. Balance in 30 days. Deed and title insurance furnished with cost of the title policy shared equally between buyer and seller. Current tenant has property rented for 2014 on a cash rent basis with tenant rights to March of 2015. Sold to the highest bidder with seller confirmation. Announcements made sale day take precedence over printed material. Sales staff are agents of the sellers only.

WILLIAM L. GAYER TRUST

Jean M. Gayer, Trustee

AUCTIONEERS & CLERKS

GENE SISCO
 402-269-3127 • Syracuse, NE



RON SVOBODA, BROKER
 402-267-2265 • Weeping Water, NE

www.ncnewspress.com ("More" Tab)