

DISCOVER | LIVE | EXPERIENCE | STAY



2018
Explore
KANSAS

5 Butler
County Lakes



11 Grace Hill
Winery



19 Maxwell Wildlife
Refuge



26 Botanica
Gardens

TABLE OF CONTENTS



BUTLER COUNTY3
 FORD COUNTY6
 HARVEY COUNTY10
 MARION COUNTY14
 KIOWA COUNTY16
 MCPHERSON COUNTY . . .18
 PRATT COUNTY21
 SEDGWICK COUNTY26
 SUMNER COUNTY28
 STAFFORD COUNTY30

Dodge City Daily Globe Wellington Daily News
 Pratt Tribune McPherson Sentinel
 St. John News Butler County Times-Gazette
 Kiowa County Signal Newton Kansan





Country and Food Trucks	May 12
NHRA Heartland Nationals	May 19 & 20
Capital City Family & Food Truck Festival	June 2
Mulvane Art Fair	June 2 & 3
Sunflower Music Festival	June 22 - 30
Tap That Topeka	June 23
Topeka Rotary Freedom Festival	June 30
Spirit of Kansas Blues Fest	July 4
Fiesta Mexicana	July 10 - 14
Rock and Food Trucks	July 28
India Fest	Aug 26
TouchATruck	Sept 1
Huff 'n Puff Balloon Rally @ Lake Shawnee	Sept 7 - 9
Kansas Book Festival	Sept 9
Tacos y Tequila @ TPAC	Sept 15
TopCon Geek Expo @ KS Expo	Sept 15 & 16
Jazz and Food Trucks	Sept 22
Cider Days Fall Festival @ KS Expo	Sept 22 & 23
Kansas Chocolate Festival	Sept 29



GREATER ANDOVER DAYS

Location: Andover Central Park & around town **Cost:** Sept. 27-Sept. 30
Cost: \$3 for adults, children 5 and under free **Contact:** (316) 733-1303

Greater Andover Days is jam packed full of fun and entertainment each year. GAD has been celebrated since 1967, with around 5,000 people attending each year.

The annual festival brings the community together to celebrate their city.

The event was created by a gentleman and a woman from Andover, who came up with the idea and name for the event.

While it has seen some changes over the years, the activities have remained pretty consistent the last five to ten years.

The fireworks and concert on Saturday night, as well as the Saturday parade, are always huge events for them.

For the parade, every school gets involved as well as others.

The parade grows larger each year, with multiple marching bands and numerous floats. It has grown so much, the logistics are becoming a challenge.

Another popular activity is the Thursday night performances by the school groups at the gazebo. Thursday night is also a good night to bring small children to the carnival because it is not as busy as Friday or Saturday night.

Another event is the tailgate on Friday, which is becoming more popular.

Other activities include a car show, hot dog eating contest and watermelon eating contest.

This year's events will be held Sept. 27 through Sept. 30. Featured will be a tailgate party, carnival, parade, car show, Saturday night concert, ice cream social, KidsFest, fishing clinic, fun run, turtle races, craft and business fair, hot dog eating contest, watermelon eating contest, and a car show.



Admission is a \$3 button that is available at local retailers. Children ages 5 and younger will be admitted free. Each year, 50 cents of each button goes to charity.

The newly completed Capitol Federal Amphitheater in Central Park will be a popular venue for GAD this year and for the inaugural Summer Concert Series.

The 2018 Summer Concert Series will kick off Memorial Day weekend with Clay Walker and special guest John Anderson. The second concert will feature blues music by the Kenny Wayne Shepherd Band. This will be a free concert to the general public, but a limited number of VIP and Premium tickets will be available for purchase.

Country music star Terri Clark with special guest Little Texas will perform on Saturday, July 21. The series will wrap up in August with a free concert yet to be announced.

COUTTS MUSEUM OF ART

The Coutts Museum of Art in El Dorado was opened in 1970 by Warren Hall Coutts.

“Warren Hall Coutts and Bud Coutts were starting out as attorneys here in the area and wanted to open an office together,” Executive Director Timothy Howard said.

Both Warren and his son Bud had a passion for collecting art. Yet, Bud never lived to see the art museum realized.

“In 1965, Bud tragically died in an airplane craft,” Howard said. “Warren opened the museum in dedication to his son.”

A few years after the Coutts Museum of Art opened, it became a nonprofit. Since its opening, the museum has had a focus on supporting art, education and artists.

“We have a large collection of local artists and regional artists. We have one of the largest collections in the country of Prairie Print Makers (and) Remington sculptures,” Howard said.

The museum has over 1,500 pieces in its collections. Types of pieces include oil paintings, water paintings, sculptures and prints.

“Not only do we have local and regional art, but European as well,” Howard said.



The Coutts Museum of Art will host various events throughout the year.

The Wichita Women's Artists Show will be on exhibit on May 2, with a reception on May 4.

On June 1, museum members can take a bus trip to view art at nearby museums.

The Coutts Museum of Art annual fundraiser, titled Art of Vino and Brew, will be held July 14. The event will feature wine and beer sampling with accompanying food. It will have a Mediterranean theme this year.

“Create at Coutts,” a three day summer camp for children, will be held July 25-27. Children will be able to learn about and create art at the camp.

The museum will show an exhibit on the Kansas Academy of Oil Painters on Aug. 8.

By the time winter rolls around again, local artist Bill Walton will have a show at the museum on his Santa Claus art and paintings. It will take place Nov. 1.

People can also visit the monthly brown bag specials at the museum.

“(They feature) local musicians who play for about an hour around noon. It's the third Tuesday of every month,” Howard said.

AUGUSTA HISTORIC THEATRE

Location: 523 State Street **Number:** (316) 775-3661

Site: augustahistorictheatre.com

The art deco Augusta Historic Theatre has been an architectural centerpiece in Augusta since it was constructed in 1935 by Dave and Aline Bisagno. It was the first theater west of the Mississippi to be lit entirely by neon. The theater has been updated with a digital projector and has state-of-the-art capability of showing 3D movies. It is the scene for many annual events. Visit the Facebook page for more information on movies, events, and happenings.



DINING DESTINATION

EL DORADO

Anita's Mexican Restaurant

2529 W. Central Ave.
(316) 321-1301

Beijing Bistro

1905 W. Central Ave.
(316) 322-9999

Fiesta Mexicana

127 N. Main St.
(316) 320-1700

Golden Asian Buffet

2350 W. Central Ave.
(316) 321-2888

Greek Stone Grill

2401 W. Central Ave.
(316) 435-5060

Hog Wild

1530 W. Central Ave.
(316) 321-9453

La Casita

124 S. Main St.
(316) 321-1084

Jimmy's Egg

1302 W. Central Ave.
(316) 425-2823

Turner's Coffee and Donuts

405 N. Main St.
(316) 321-3668

Two Brothers Barbecue

1701 W. Central Ave.
(316) 452-5522

Willie's

151 N. Main St.
(316) 452-5546

Moe's

710 S. Main St.
(316) 322-8464

Real Deal Cafe

2593 SE U.S. Highway 54
(316) 320-3212

Russell's Daylight Donuts

1243 W. Central Ave
(316) 321-0840

True Lies

607 N. Oil Hill Road
(316) 320-9255

Walnut River Brewing Co.

111 W. Locust Ave.
(316) 351-8086

AUGUSTA

Beijing

301 W. Seventh Ave.
(316) 775-5999

Bricks Bar & Grill

409 State St.
(316) 775-0004

King Buffet

403 Walnut St.
(316) 219-1308

Millers Five Drive-In

330 State St.
(316) 775-9989

Oklahoma Boys

114 E. Seventh Ave.
(316) 440-2944

Playa Azul

710 W. Seventh Ave.
(316) 775-6446

Sugar Shane's

430 State St.
(316) 201-1099

Turner's Donut

507 State St,
(316) 775-3668

ANDOVER

Billy Sims

200 E. Cloud Ave.
(316) 733-6294

Bob & Luigi's

325 W. Central Ave.
(316) 733-1111

Boone Pickins BBQ

213 W. Central Ave
(316) 425-3764

Golden Garden

544 N. Andover Road
(316) 733-2852

Great Wall

340S. Andover Road
(316) 733-6833

Hereford House Restaurant

1400 Terradyne Drive, Suite 100
(316) 733-7800

Las Palmas Restaurant

119 W. Central Ave.
(316) 733-2332

Los Cocos Restaurant

324 E. Cloud Ave.
(316) 722-6267

Metro Grill II

321 S. Andover Road
(316) 351-5882

Poplar Restaurant

127 W. U.S. Highway 54
(316) 773-9996

Scooter's Coffeehouse

626 S. Andover Road, No. 100
(316) 733-1330

Spaulding's Food & Drink

220 W. Third St.
(316) 295-3913

Timbuktu Bar & Grill

251 N. Andover Road
(316) 733-5630

DOUGLASS

Triangle Restaurant

326 S. Forrest St.
(316) 746-2071

BENTON

Stearman Field Bar & Grill

14789 SW 30th St.
(316) 778-1612

TOWANDA

Thunderbird Burgers & Ice Cream

719 N Main St.
(316) 536-6032

BEAUMONT

Beaumont Hotel

11651 SE Main St.
(620) 843-2422

AUGUSTA HISTORICAL MUSEUM

Location: 303 State St., Augusta **Contact:** (316) 775-5655 or www.augustahistoricalsociety.com

When: 11 a.m. to 3 p.m. Monday-Friday; 1 to 4 p.m. Saturday and Sunday

The historic C.N. James Cabin and Trading Post, located at 303 State Street and built in 1868, is comprised of hand-hewn cottonwood logs from along the Walnut River. The cabin is on the National Register of Historical Places is one of only two in the state of Kansas, on its original site. It is now adjacent to the Augusta Historical Museum,

which offers rotating exhibits covering local historical eras from the pre-1800s through the 1950s. The facility features a gift shop and a beautiful Native Flower Garden.

The Augusta Historical Society is part of the group planning and presenting Augusta's big 150th Anniversary Celebration this fall.

TWISTED OZ MOTORCYCLE MUSEUM

Location: W. 7th, Highway 400, Augusta **Contact:** (316) 977-9257

When: 10 a.m. to 5:30 p.m. Wednesday - Sunday

The Twisted Oz Museum opened in April 2016 and has become a nationally known destination. The eclectic museum features hundreds of vintage

motorcycles and exciting murals by local artists. History buffs and cycle enthusiasts from across the nation have already visited the unique space.

DOUGLASS HISTORICAL MUSEUM

Location: 314 S. Forrest, Douglass **Contact:** (316) 746-2319

When: 9-11 a.m., and 1-3 p.m., Monday, Wednesday, and Friday

The Douglass Historical Museum is like opening a treasure chest of local history. It has been arranged in replicas of rooms and shops that would have been found in Douglass' past. The

museum has an extensive amount of researchable material of interest to genealogists; local censuses from 1880-1930, family files, newspapers and seasonal histories in some cases.

KANSAS OIL MUSEUM

Location: 383 W. Central, El Dorado **Contact:** (316) 321-9333

When: 10 a.m. -4 p.m., Tuesday - Friday; noon to 5 p.m. Saturday

The Kansas Oil Museum is the one of the largest museums in the state with a focus on the history of America's early 20th-century oil industry. The history of Butler County, Kan., is also preserved and interpreted from the earliest days

of the Native American tribes and the pioneers, to small-town and ranch life of the 1900s. A large research library and extensive archival and photographic collections, are also featured.

BUTLER COUNTY LAKES

AUGUSTA'S LAKES

Where: North edge of Augusta

When: Year Round

Cost: Residents, \$15, annual permit, not daily permits; Butler County residents, \$30 annual permits and \$5 daily permit; anyone outside of Butler County, \$50 annual permit, \$10 daily permit

Contact: Public Safety Building, 2100 N. Ohio or Utility Office at 111 E. Sixth Ave., www.augustagov.org

Augusta can boast about a beautiful 265-acre City Lake that has been restocked with a nice variety of fish. Anglers are also enjoying the new fishing docks that have been erected at several places around the lake. In addition



to fishing, picnicking and sail boating are also popular.

Residents will tell you that there's no better place to be to catch a beautiful Kansas sunset that over Augusta's lakes.

The pedestrian and bicycle path provides walkers, runners, bicyclists, and dog walkers with the perfect surface and scenery.

Shryock Park is located next to the

Augusta City Lake and is nine acres of fun. It features two shelter picnic areas, a boat ramp, fishing dock, Castle Play Park, and the newest addition, the Splash Park.

The medieval-themed splash pad features water rings and fun fixtures, a restroom facility, shade structures, and a convenient body dryer.

Augusta residents are also proud of the 418-acre Santa Fe Lake, just minutes west of town. Hike or bike the trails, check out the waterfalls and take in the beautiful scenery surrounding the lake.

The area has an abundance of nature right on the edge of city living. The natural charm and beauty is characterized by natural stone shorelines, beautiful native trees, and a wide variety of wildlife, flowers, plants and grasses.

Campgrounds are available. There is swimming, and paddleboard yoga classes are available. Boat ramps and docks are available for boats and personal watercraft.

Anglers are enjoying the variety of fish following a re-stocking program.

EL DORADO LAKE

Where: 3 miles east of El Dorado on U.S. 54 & 1 mile north

When: Year Round

Cost: Day permits \$5; Annual pass \$25

Contact: 316-321-7180, ksoutdoors.com/State-Parks/Locations/El-Dorado

One of the top state parks in America based on fishing, boating and family fun, El Dorado State Park is conveniently located at the edge of the Flint Hills near three state highways and an interstate (the Kansas Turnpike). With about 2,000 acres of park and 4,000 acres of wildlife area surrounding 8,000 acres of water with 98 miles of shoreline, there are plenty of opportunities to explore this premier lake destination.

A variety of trails are available in the State Park - hiking trails, biking trails and horse trails which include hitching posts on the shoreline and campsites

with corrals and other equestrian amenities. Steep, rocky shorelines, old river channels, submerged railroad beds and dead standing timber beckon a variety of sportfish popular in

Kansas along with the anglers that seek them. Wildlife enthusiasts can see a wide range of small mammals, white-tailed deer, songbirds, game birds and waterfowl.

For those wishing to swim, there are 98 miles of shoreline, offering plenty of places for wading on the beaches, Bluestem Point and Walnut River, offering large, shady areas, playground equipment and picnic tables.

There are great campsites available, both with and without camper hook-ups, as well as cabins.



SANTA FE LAKE

Where: 11367 SW Shore Dr. off of Santa Fe Lake Road

When: Year Round

Cost: Daily, \$6 per vehicle or person on walk in; annual for Augusta resident, \$21 annual non-Augusta resident, \$40. Permit fees are required in addition to daily or annual recreation permits for boats, jet skis, sailboats, row/paddle boats and campsites

Contact: 316-775-9926 or email santafelake@yahoo.com, www.santafelakes.com



The cornerstone of art in Butler County

A stimulating and inspiring, cultural and educational, regional art museum for all ages!

110 N Main Street

El Dorado, KS 67042

316.321.1212 • Free Admission

Tue-Fri 9a.m.-5p.m. • Sat 12a.m.-4p.m.

www.couttsmuseum.org



SANTA FE DEPOT

Coming soon, the Dodge City Area Chamber of Commerce, Dodge City Ford County Economic Development Corporation and Convention and Visitors Bureau will be under one roof.

All three entities will be at the newly remodeled Santa Fe Depot on Central Avenue and Wyatt Earp Boulevard.

“With the move it’s going to create synergy with all of us in the same building,” CVB director Jan Stevens said. “We do talk to each other over the phone but with us being under one roof it will lead to more face to face talks between each entity.”

“The CVB brings people in from

out of town,” Stevens said. “Eco dev gets businesses into town and the chamber handles a lot of the cross over.”

“We all meet monthly discussing the move along with other projects that we’d like to work on but we haven’t gone into detail on what those projects are until after the move.”

Chamber president Tara Burkhart added, “While Economic Development, the Convention and Visitors Bureau and the Chamber are separate entities, we do all work together in some capacity week to week.”

“Economic Development is responsible for bringing new businesses to

Dodge City, the Chamber then helps foster growth and success for those businesses and the Convention and Visitors Bureau works to bring in tourism from around the state, out of state and even from out of the country which has a huge economic impact on businesses and our city as a whole.”

“The synergy that will be created from us all being under one roof will help enhance the business climate and build a stronger Dodge City.”

With the move it will leave the current Chamber of Commerce building vacant.

“The Chamber building is currently for sale and is currently listed with

the Board of Realtors in Dodge City,” Burkhart said. “We hope to sell the building once we have moved to the Depot building, so if anyone is interested in the building they can contact their preferred Real Estate agent for more information.”

According to economic development director Joann Knight, the chamber and development corporation have been together for more than 30 years.

“When I first started in 1991,” Knight said. “We were all together. The CVB built the information center and moved their staff to that building.”

“With the expansion of programming and staff over the years, they

Panhandle Railroad Museum Inc

425 EAST HARVEY WELLINGTON, KS 620-399-8611
TUES-SAT 10AM-4PM PERRY & SHERRY WILEY

PRAIRIE FLOWER CRAFTS
Fabric - Quilting Supplies

205 Pioneer St.
Alden, KS

620-534-3551
www.prairieflowercrafts.com
Hours: Mon-Sat 10am-4:30pm

added employees at Military Plaza.

"A couple benefits to moving all of our organizations to the Depot include adding the Convention and Visitors Bureau staff to rejoin with the staff of the chamber and development corporation.

"We will all work together to bring more opportunities to the community such as our new Dodge City mobile app and look at sharing additional resources."

Being in one location, Knight emphasized that everyone in the community will also benefit from the three entities being together.

"Having the depot completely built out and having activity in the entire building it benefits the community as well," Knight said. "With the historical significance, keeping activity in a building helps to prevent deterioration.

"We are excited to be part of opening this entire building up for the community."

The Dodge City/Ford County Development Corporation is the primary economic development

organization that works to help with expansion of exiting business as well as recruit businesses to come into the area.

"We work to make our community and region a better place to live, work and play," Knight said. "In order to meet the requests of our existing businesses, we created the DodgeCityHasJobs.com website and use it to market our job openings to other regions as well as assist companies directly with their employment needs.

"We help to facilitate all aspects of community and economic development by bring people and resources together."

With the help of the economic development corporation, four organizations have been created in the past 10 years.

Those organizations include: Dodge City Festivals, which is a joint partnership between the development corporation, chamber and CVB that grants funds to startup events in an effort to bring year-round events to the community; Main Street Dodge

City, whose primary focus is on the heart of our community that helps with programs to enhance the buildings in downtown and events to help bring awareness to this area; Community Housing Association of Dodge City, was created to address the low to moderate income housing needed by businesses in order to help meet workforce needs and neighborhood revitalization.

"CHAD flips abandoned houses and works with the Dodge City Community College building trades class to help build new houses in older neighborhoods while helping the students meet their curriculum with hands on experience," Knight said.

Recently the new Kansas SBDC was created.

"We have partnered with Seward County Community College to add an office and staff here in Dodge City to offer training and one-on-one business consultation to new start up and existing small businesses in a seven county region from Kiowa County to Ness County,"

Knight said. "We are currently seeking to fill this position and are excited about the opportunity to utilize our new training room at the Depot to host many of the training opportunities that we will be bringing to Dodge City."

"We're all spokes of the same wheel," CVB Assistant Director Colleen Hastings added. "The CVB brings people in from out of town, Eco devo gets businesses into town and the chamber handles a lot of the cross over. We all meet monthly discussing the move along with other projects that we'd like to work on but we haven't gone into detail on what those projects are until after the move."

"Our goal for relocating to the Santa Fe Depot is to continue to build on partnerships and bring more opportunities to our community," Knight added.

The depot also holds the Depot Theater Company, which puts on plays throughout the year, and also is home to the local bus service and Amtrak station.

DODGE CITY DAYS
JULY 26 - AUGUST 5, 2018
The Wild Side of the State
 PARADE | BBQ CONTEST | PRCA RODEO | CONCERTS | AND MUCH MORE!
DODGECITYDAYS.ORG
 GET THE HECK OUT OF INTO DODGE CITY
 www.VisitDodgeCity.org

BOOT HILL MUSEUM

Location: 501 W. Spruce Street, Dodge City

The Boot Hill Museum has been a major facet to the legacy of Dodge City for several years, welcoming tourists and locals to view the rich history of the town.

March 23 marked 70 years since Boot Hill Museum was established in Dodge City, and the museum held a platinum party in celebration.

"The museum has been here for 70 years, and so we kind of want to show our appreciation for the many years of support," said Laura Tawater, marketing manager for the museum, prior to the event. "We're also doing this so people will be aware of how long we've been here."

Coincidentally, 2017 also marks the 60th season of the Long Branch Variety Show, which is featured every summer. According to Tawater, this is also a component to the celebration.

"There will be entertainment in the Long Branch Saloon, and there will probably be some talk about the (variety) show too," said Tawater prior to the celebration. "We'll have some can-can dancers here and some gun fighters and they'll be doing some entertainment to kind of highlight the old variety shows."

During the entertainment segment, some special guests were in attendance including Connie Olson Nixon, Karen May Ward and Linda West Koch, original can-can dancers from the variety show in 1958.

"We're really highlighting the 60 seasons of the Long Branch Variety Show," said Tawater prior to the celebration. "These ladies have been a part of that, and that's pretty special that they're coming here for that."

On top of this, a few former gunfighters, one being Jacque Barngrover, also attended.

To recognize 70 years of service in the community, the platinum party featured numerous activities and contests for guests.

"We will have drawings and prizes available,"



PHOTO COURTESY OF MICHAEL SNELL

said Tawater prior to the celebration. "We have our grand prize package which is 70 Long Branch Variety Show tickets."

A free hamburger feed was available to the first 500 guests to attend and sasparilla was on sale for 70 cents. Guests were welcome to take photos with Miss Kitty and the Marshal, and Miss Kitty also put on a special performance.

Along with this, the winners for a coloring contest held by the museum was announced and awarded a prize.

"We are also doing an association drive featuring challenge coins," said Tawater prior to the celebration. "During this, we'll be sharing rendering of the new exhibits and information about the Boot Hill expansion project."

Tours of new and updated exhibits were offered to guests during the platinum party, one being an updated version of the "guns that won the west" exhibit, which will feature new dis-

plays.

The Bat Masterson watch was also on display, but its permanent display location is still unknown. The watch will be presented this summer with a special event.

Cookbook recipes were also collected during this celebration. All guests were also welcome to submit a recipe for the Boot Hill cookbook that will be in the Boot Hill Museum gift shop.

"We'll have entry forms for recipes and they'll submit a recipe of their choosing," said Tawater prior to the celebration. "They'll also do a write-up of a connection or memory that they have of Boot Hill Museum, and that will be published along with their recipe."

The museum will present celebrations of the 70th anniversary and the 60th year of the Variety Show throughout the summer. The Variety Show anniversary is also the theme for the annual Dodge City Days celebration.

DODGE CITY TRAIL OF FAME

The Dodge City Trail of Fame is a walking tour of Old Dodge City National Historic District. The trail is marked with bronze sidewalk medallions and statues to commemorate the many denizens of historic Dodge City. Medallions are dedicated to notable television and movie stars who have portrayed Dodge City residents. Statues

show Doc Holliday, Wyatt Earp and El Capitan, the longhorn steer.

Maps are available at the Dodge City Convention & Visitors Bureau Welcome Center on Wyatt Earp Boulevard. Free tours are available with Special U.S. Marshal Charlie Meade, 620-253-0231.

LONG BRANCH LAGOON

Location: 111 4th Ave., Dodge City
Hours: 11:30 a.m. to 7 p.m. Night swims from 8 to 11 p.m. on Tuesdays and Saturdays
Number: (620) 225-8156

Dodge City's water park, returns for its second summer season beginning Memorial Day weekend

and staying open until Labor Day. The park added a rock climbing wall and set aside an area for gatherings within the park. These new attractions join a wave pool, slides, a lazy river, an Olympic-size competition pool and a kids pool.

Daily passes are \$7 and season passes are available.



KANSAS TEACHERS HALL OF FAME

Location: 603 Fifth Avenue, Dodge City
Hours: Monday through Saturday 10 a.m. to 5 p.m.
 Sundays Memorial Day through Labor Day 1 to 5 p.m.
Number: (620) 225-7311

The Kansas Teachers Hall of Fame is the first one of its kind in the United States. Visitors can find photos and stories about Kansas' best and brightest, early and present-day teachers. The Hall of Fame Gallery displays photos and stories of 390 teachers named to the Hall of Fame, with new additions each year.

DINING DESTINATION

2nd Avenue Lunch Co.
 509 N. Second Ave.
 (620) 371-6644

Bad Habit
 2303 W. Wyatt Earp
 (620) 371-7233

Bella Italia
 308 W. Wyatt
 (620) 225-1800

Billy Sims BBQ
 2503 Central
 (620) 371-6002

Boot Hill Casino Fireside Grill
 4000 W. Comanche
 (620) 582-7777 (must be 21)

Casa Alvarez
 1701 W. Wyatt Earp
 (620) 225-7164

Casey's Cowtown
 503 E. Trail
 (620) 225-1176

Dodge House Restaurant
 2408 W. Wyatt Earp
 (620) 225-9100

Don Hector
 208 S. Second Ave.
 (620) 430-2313

El Charro
 1209 W. Wyatt Earp
 (620) 225-0371

El Korita
 2001 W. Wyatt Earp
 (620) 371-6008

Golden House
 120 W. Wyatt Earp
 (620) 337-9887

Golden Pancake House
 2110 E. Wyatt Earp
 (620) 227-6196

Guymon Petro Bar & Grill
 301 4th Avenue
 (620) 371-7500

I Don't Care Sports Bar & Grill
 1510 W. Spruce
 (620) 371-6061

Imperial Gardens
 2409 Central
 (620) 225-2288

Jaliscos
 2601 Central
 (620) 227-0888

Kate's
 305 E. Trail
 (620) 225-9466

King Buffet
 1005 W. Wyatt Earp
 (620) 338-8618

Lotus Garden
 1202 E. Wyatt Earp
 (620) 227-7928

Lupita's
 415 S. Second Ave.
 (620) 225-4645

Osaki Sushi & Steakhouse
 2100 W. Wyatt Earp
 (620) 227-5235

Prime on the Nine
 1800 Matt Down Lane
 (620) 227-2736

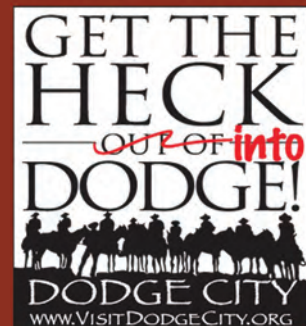
Saigon Cafe Bistro
 202 E. Frontview
 (620) 225-0682

Sarocha's
 1510 W. Wyatt Earp
 (620) 227-2400

Taco Palenque
 307 Military
 (620) 225-3682

Tacos Jalisco
 412 E. Wyatt Earp
 (620) 225-3101

Vallarta
 1301 W. Wyatt Earp
 (620) 408-9747



WWW.VISITDODGECITY.ORG

1-800-OLD-WEST



WARKENTIN HOUSE

Location: 211 E. First Street, Newton
Number: (316) 283-3113

Website: newtonkansas.com/visiting-newton/warkentin-house

The Warkentin House is the former home of Bernhard and Wilhelmina Warkentin, built in 1887 that is now operating as a historic house museum. The Warkentins were instrumental in bringing Turkey Red Wheat and Mennonites to Kansas.

April through May open 1 to 4:30 pm. Saturdays and Sundays. June through August open 1 p.m. to 4:30 p.m. Wednesdays through Sundays. September through December open 1 to 4:30 p.m. Saturdays and Sundays. Admission is \$4 for adults, \$2 for children ages 5 through 12.

LEARN THE STORY

of Mennonite immigrants who helped make Kansas the breadbasket of the nation through eight buildings in a village-like setting.



200 N. Poplar,
Goessel, Kansas

Open
 March – April & October – November:
 Noon – 4 p.m., Tues. – Sat.
 May – September:
 10 a.m. – 5 p.m., Tues. – Sat.



For more information, visit: www.goesselmuseum.com or call 620-367-8200



MORE THAN JUST FOOD

Among the numerous sites to see and explore in Harvey County, there are a handful of restaurants well worth the trip alone. These destination dining spots range from fixtures of the community to eateries rapidly rising in popularity, gaining said reputation. Looking for your next food-based adventure? Then be sure to visit at least one of the following restaurants.

Of the establishments listed, Cy's Hoof and Horn has the longest tenure in the community. Owner Cy Lampe started with a small kitchen and catering business in 1984 before personally renovating the Sedgwick building that has housed the restaurant since 2001. The personal touch is very important to Lampe, which makes its way into the food like the chicken fried steak and other steaks the restaurant is known for.

"We hand cut and age our steaks in-house. We try not to cut any steaks before it has 45 days age on it," Lampe said. "Even our chicken fried meat is brought in the box and we cut it and tenderize it right here."

While not around quite as long, Genova's Italian Restaurant in Newton is fast becoming a similar fixture of the community. Named the "Best of the Best" of restaurants in Harvey County by Kansan readers this past year, it is also currently a finalist in the "Kansas! Magazine" Best Local Eats competition. Known for the Genova's special ("to die for," according to general manager Rosie Martin) and chicken Genova, the restaurant has quickly gained a dedicated following from all over the state and beyond – including some loyal customers from Texas – both because of the quality of food and the atmosphere that Martin has created.

"I'm not here to sell food. I'm here to make people feel comfortable and make their time in here as best as possible for everybody," Martin said.

The Barn opened its doors in Burrton about two years ago and quickly began to earn renown for its chicken fried steak (made specifically for it, and cooked and tenderized in a special way), fresh sides and homemade desserts, as well as the quaint aesthetic that resonated with customers. According to owner Lesley Matlack, she was just doing what she loves. To see the feedback has been astounding, as The Barn now also found itself occupying a spot among the Best Local Eats finalists, just like Genova. Similar to Genova, the Burrton establishment also strives to provide a very specific dining experience.

"We consider ourselves to be home," Matlack said. "We want people to come here and feel like they're eating a home-cooked meal from mom or grandma."

Back Alley Pizza is another fairly new entry – starting its life as Norm's Coffee Bar. Norm's added brick oven pizza to the offerings, and the pizza business quickly grew to be take the space the owners could handle. Norm's has moved to a new location as a stand alone business under new ownership.

Back Alley Pizza, along with Genova, was named one of the top 20 local restaurants in Kansas by readers of Kansas Magazine.

All four restaurants are unique in some way, so for those looking to spice up their next road trip, consider making a stop at one of these eateries and trying their signature dishes.

Faith & Life
 BOOKS • CARDS • GIFTS

606 N. Main St.
 Newton, Kansas
 316-283-2210
info@faithandlifebookstore.com

Encouraging Everyday Faith to Inspire Extraordinary Life

Mon-Sat 9am-5:30pm
faithandlifebookstore.com

GRACE HILL WINERY

Location: 6310 S. Grace Hill Road, Whitewater
Hours: Monday and Thursday from 10 a.m. to 4 p.m. and Friday through Sunday from noon to 6 p.m.
Number: (316) 799-2511.
Website: gracehillwinery.com

Grace Hill Winery's event center is a 2,000 square foot building that holds up to 140 people, with windows along the south wall overlooking the vineyards. An adjoining patio area and observation deck provide spaces for visitors to enjoy looking over the 11

acres of vineyards planted at Grace Hill Winery.

"We do all-volunteer harvests here," said Jeff Sollo, marketing manager at Grace Hill Winery.

Visitors can take in the tasting room, where there are 16 different wines to try and buy. Gift items, soaps, jellies and honey are also available for sale.

Grace Hill Winery opened in 2008 and produced 150 gallons of wine in their first year of operation. They expect to produce between 900 to 1,000 gallons this year.

"We've grown a lot," Sollo said. "We've kept expanding the vineyard."

The vineyards are primarily made up of Chardonnay, Cabernet Franc, Norton, Muscat and Chambourcin grapes.

"We grow a lot of French hybrids," Sollo explained. "We can't really grow cabernet, chardonnay, things like that — it's Kansas, it's too cold and our growing season is not long enough."

Being close to a major highway helps bring visitors to the winery.

"We're getting people from all over the place. We get quite a few from within the area, but we get a lot of people kind of traveling through. There's a lot of wine tourists out there," Sollo said.

Grace Hill Winery, 6310 S. Grace Hill Road in Whitewater, is open Monday and Thursday from 10 a.m. to 4 p.m. and Friday through Sunday from noon to 6 p.m.



CARRIAGE FACTORY ART GALLERY

Location: 128 E. Sixth Street, Newton
Hours: Tuesday-Friday Open noon-5 p.m., 10 a.m. to 5 p.m. on Saturdays.
Number: (316) 284-2749
Website: carriagefactoryartgallery.com.

Carriage Factory Art Gallery houses three levels of art. Paintings, sculptures and ceramics from Kansas artists fill the building, which still features limestone walls and the original tin ceilings.

"The original building was built in 1883 as a carriage factory," said Carriage Factory Art Gallery Director Cindy Snider.

In honor of the building's history, a carriage from Fisher Carriage Works is displayed at the front of the gallery's main level.

"It's kind of a hidden gem for a lot of people," Snider said with a smile. "I say that we have beauty, history and a little bit of mystery."

The main exhibit room often features artists from Kansas, bringing works together around a theme that changes every two months.

"We look for different things in our art that people may not have seen before in this area," Snider said.

"We're just open to what we think this area would enjoy, to either view it or buy it and take it home to enjoy."

As visitors ascend through the building, they can see works in oils, watercolors, mixed media and acrylics. Carriage Factory Art Gallery offers guided tours for adults and scavenger hunts for children.

"Every third Thursday, we have music or some kind of art activity," Snider noted. "It's very relaxed and casual."

A park with shade trees, flowers and a fountain offer a place for visitors to take in natural beauty.

"We have benches out in the park so people can eat their lunches and just enjoy it," Snider said.

The gallery relies on the sale of art, memberships and donations to operate. It can be rented for parties and special occasions.

"We are a nonprofit organization, here to serve the community," Snider said.

Looking for blue skies?

Explore Newton's art,
attractions and events.
Plan your next visit at
ToNewton.com

Blue Sky Sculpture,
8 Wonders of Kansas Art



Newton Convention & Visitors Bureau

Inside Newton City Hall • (316) 284-3642

• tonewton.com •  VisitNewtonKS

KANSAS LEARNING CENTER FOR HEALTH

TOUCH TASTE SMELL HEARING



Location: 505 Main Street, Halstead
Number: (316) 835-2662
Website: learningcenter.org

Founded in 1965, KLCH continues to be the only health education center located in Kansas, and the nation's second oldest health education museum. The Center offers 17 health education programs for students in field trip and outreach formats. Both formats adhere to the Kansas and National Health Standards. KLCH also offers a newly renovated full-service museum including hands-on exhibits, a 68 person auditorium and Valeda, a transparent anatomical mannequin. Fun and educational experiences await you at KLCH. Each nook and cranny offers an unexpected discovery, and each visit a new and exciting adventure.

Hours are 9 a.m. to 4 p.m. Monday - Friday. Admission: Self Guided Tours are \$6 per person (children under 3 are free), Half Day Field Trips are \$9 per person and Full Day Field Trips are \$13 per person. Museum memberships are now available. Become a member today and enjoy unlimited visits! Visit www.learningcenter.org for more information.

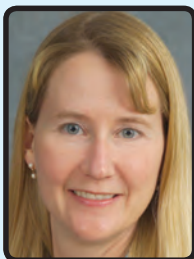


BECK'S FARM

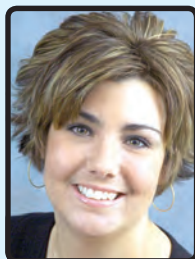
Location: 7620 S. Anderson Road, Newton
Hours: Monday - Saturday 10 a.m. - 6 p.m. and Sunday 12 p.m. - 5 p.m.
Number: (316) 282-2325
Website: becksfarm.com

Ford Hearing Aid & Audiology

- DIAGNOSTIC AUDIOLOGY EVALUATIONS
- HEARING AIDS & SERVICE
- FULL TIME AUDIOLOGISTS
- DIGITAL, MULTI-MICROPHONE & OPEN FIT HEARING AIDS



Barbara Jozsa
 MA, CCC -A
 Clinical Audiologist



Carrie Claassen
 MA, CCC -A
 Clinical Audiologist

316-283-3552 • 877-293-5434 Toll Free

500 N. Main • Suite 212 • Newton, KS 67114

Serving Newton Since 1981 Locally Owned and Operated



KAUFFMAN MUSEUM

Location: 2801 N Main Street, North Newton
Hours: Closed on Mondays. Tuesdays-Fridays 9:30 a.m. - 4:30 p.m. Sundays 1:30-4:30 p.m.
Number: (316) 283-1612

Kauffman Museum features an historic farmstead with heritage flower and vegetable gardens around the 1875 Voth-Unruh-Fast House and the 1886 Ratzlaff Barn. Inside, there is the award-winning permanent exhibit Of Land and People which tells the story of the coming of the Mennonites from Europe to the central plains in the 1870s and their encounters with the prairie environment and its people.

Cool Things Happen at the Kansas Learning Center for Health...

- ✓ Meet "Charlie Bones", a Real Skeleton
- ✓ Inspect the inside of an eyeball
- ✓ "Get Pumped" About the Human Heart
- ✓ Look Inside a Real "Iron Lung"
- ✓ Play in Our New "Kids FUNd Corner"



LearningCenter.org



316-835-2662 ♦ Open Mon-Fri 9 a.m. - 4 p.m.

DINING DESTINATION

BURRTON

The Barn
307 W Dean St
(620) 463-8506

HALSTEAD

Al's Place
221 Main St
(316) 835-5035

D'Angelo's Pizzeria
247 Main St
(316) 835-3598

Gambinos Pizza
247 Main
(316) 835-3598

Golden Harvest Restaurant

240 Main St
(316) 835-2500

Legacy Grill

221 Main St
(316) 830-6080

Subway

101 Main St
(316) 835-3500

HESSTON

Casey's General Store

724 E Lincoln Blvd
(620) 327-2478

D'Angelo's Pizzeria
351 N Old Hwy 81
(620) 327-3160

El Cerrito

606 E Lincoln
(620) 327-0573

Lincoln Perk

709 E Lincoln Blvd
#100
(620) 327-2349

Panda Kitchen

4 Leonard Ct
(620) 327-4029

Pizza Hut

720 E Lincoln Blvd
(620) 327-2533

Sandy's Daylight Donuts

349 N Hwy 81
(620) 327-4888

Skoops

101 US 81
(620) 327-3111

Sonic Drive-In

707 E Lincoln Blvd
(620) 327-0124

Subway

615 E Lincoln Blvd
(620) 327-3080

The Water's Edge Restaurant

701 S Main St
(620) 327-4099

NEWTON

701 Café

701 N Main
(316) 804-4573

Acapulco Mexican Restaurant

217 W Broadway
(316) 283-6026

Applebee's

601 N Manchester Ave
(316) 284-9366

Arby's

421 Windward Dr
(316) 282-0902

Back Alley Pizza

125 W 6th St
(316) 283-1550

Billy Sims BBQ

1414 N Main St
(316) 804-7771

Braum's Ice Cream & Dairy Store

1209 E 1st St
(316) 283-7509

The Breadbasket

219 N Main St
(316) 283-3811

Burger King

620 SE 36th St
(316) 282-9269

Casa Fiesta

1607 N Main St
(316) 283-7960

Casey's General Store

1815 W 1st St
(316) 283-7206

Charlie's Restaurant

200 Manchester Ave
(316) 283-0790

China Inn Restaurant

2300 N Anderson Ave
(316) 283-6295

Chong's Restaurant

1816 N Main St
(316) 283-8250

CJ's Pancake House

1525 E 1st
(316) 283-5653

Curtis C's Diner

1039 Washington Rd
(316) 283-6333

Domino's Pizza

1410 S Kansas Ave Suite 1200
(316) 282-3434

Druber's Donut Shop

116 W 6th St
(316) 283-1206

El Toro Café

121 W 5th St
(316) 283-4044

Fuji Japanese Bistro

512 N Main St
(316) 587-8163

Genova Italian Restaurant

1021 Washington Rd
(316) 587-8099

Great Wall Chinese Restaurant

2305 Co Rd 821
(316) 283-6668

Gurty's Burgers & Shakes

214 E 12th St
(316) 333-1878

Kansas Bar & Grill

1109 E 1st St
(316) 283-7233

Kentucky Fried Chicken

1500 E 2nd
(316) 283-4613

La Laguna

123 W Broadway
(316) 283-1874

Le J's Bar-B-Q

601 SE 36th St Suite 108
(316) 283-0802

Little Caesar's Pizza

1005 N Main
(316) 804-4445

Lupe's Carry Out

1305 Washington Rd
(316) 283-5502

Moxie Grill & Bar

1420 Old Main St
(316) 212-1668

McDonald's

1321 N Main St
(316) 284-2891

Mojo's

300 27th St
(316) 284-5204

Newton Donut

1710 N Main
(316) 587-8188

Norm's Coffee Bar

613 N Main St
(316) 804-4924

Panda Hibachi Grill & Sushi

427 S.E. 10th St
(316) 804-7700

Papa John's

1700 N Main St
(316) 282-2222

Pizza Hut
1205 Washington Rd
(316) 283-3333

Play-mor Lanes Grill

1115 Washington Rd
(316) 283-0095

Prairie Harvest

601 N Main St
(316) 283-6623

Red Coach Restaurant

1301 E 1st St
(316) 283-3699

Sonic Drive-In

1215 N Main St
(316) 283-8169

1116 Washington Rd
(316) 283-0604

Strike & Spare Grill (Eastgate Lanes)

1610 E 2nd St
(316) 283-0430

Subway

1715 N Main St
(316) 283-8448

1601 S Kansas Ave
(316) 283-2934

Taco Bell

1403 N Main St
(316) 283-5510

Taco Tico

2406 N Anderson Ave
(316) 804-7262

Tokyo Hibachi Grill & Sushi Bar

1400 S Kansas Ave Suite 600
(316) 283-8800

Wendy's

110 W 12th St
(316) 283-8105

SEDGWICK

Big Boys BBQ
615 N Commercial Ave
(316) 217-1719

Cy's Hoof & Horn Supper Club
425 N Commercial Ave
(316) 772-5329

Jimmie's Diner

1519 George Washington Dr
(316) 558-5440

Joey's Café

503 N Commercial Ave
(316) 215-0222

Killroy's Pizza & Café

106 E 5th
(316) 772-0010

WALTON

Whistle Stop Café
106 Main St
(620) 837-3136

The Breadbasket
Restaurant and Bakery

Breakfast • Lunch • Sunday Buffet
German Buffet • Homemade Bakery
219 N Main, Newton • 316-283-3811
newtonbreadbasket.com • breadbasket@cox.net
M-Th 6:30am - 5:30pm • Fri & Sat 6:30am - 8:00pm
Sunday 10:30am - 2:00pm



MENNONITE SETTLEMENT MUSEUMS

Location: 501 S. Ash Street and 312 E. Grand Street, Hillsboro
Number: (620) 947-3162
Website: cityofhillsboro.net/museums.html

A drive through Hillsboro will take visitors back in time as they spot several historic locations now serving as museums.

Mainstays of the Hillsboro Historical Society include the Schaeffler House Museum, 312 E. Grand St., and the Adobe House Complex, 501 S. Ash St.

The Adobe House Complex, also known as Peter Paul Loewen House or Pioneer Adobe House, includes the house, two attached barns, a school house and a flour mill. The main building, constructed in the Russian style out of clay brick in 1876, is the last remaining house of its kind in North America.

The site was chosen in a historical preservation lottery to receive a \$69,340 grant from the Heritage Trust Fund. The fund provides matching funds for the preservation of properties on the National Register of Historic Places or the Register of Historic Kansas Places.

"The grant will be used to redo masonry at the adobe house both inside and out," said Mary Regier, chair of the Hillsboro Museum

Advisory Board. "We'll be doing an extensive amount of work on that starting soon."

The W.F. Schaeffler House Museum is also available for tours, which was built in 1908 at 312 E. Grand St.

"The Schaefflers were entrepreneurs in town. They owned a store on the corner of Main and Grand Streets and that building still says 'Schaeffler Block' at the top," Regier said. "Their home has two floors fully furnished to the period. It's really a step back in time."

The Schaeffler "block" at one time included the family business, the Lutheran church, parsonage and school next door, as well as another home to the north of the museum.

"Different things in the museums impact different people," Regier said. "Many people are surprised by the number of personal connection they make as they walk through."

Cost: \$5 for adults, \$3 for students

Hours: by appointment. Please call the city office several days in advance to schedule a guide.

DINING DESTINATION

MARION

- Carlson's Deli**
1121 E. Main Street
(620) 382-2985
- Cindy's Family Cafe**
211 E. Main Street
(620) 382-2400
- Cazadores Mexican Restaurant**
214 E. Main Street
(620) 382-2175
- Nuttin Butt Good BBQ**
708 N. Cedar Street
(620) 382-5769
- Wagon Wheel Express**
202 W. Main Street
(620) 382-3544
- Willy J's 9th Lane**
131 S. Thorpe Street
(620) 382-2630

PEABODY

- Coneburg Inn**
904 Peabody Ave.
(620) 983-2010
- Peabody Sausage House**
105 W. Ninth Street
(620) 983-2160
- Pop's Diner**
115 N. Walnut Street
(620) 983-2307

HILLSBORO

- Panda Kitchen**
107 W. Grand Ave
(620) 947-2080

El Lorito

117 S. Main Street
(620) 947-0260

Norel Farms Bakery

207 N. Main St
(620) 947-2343

BURNS

Pizza Rehea's
110 East Broadway Street
(620) 726-5524

FLORENCE

Auntie M's
503 Main Street
(620) 878-4382

Town & Country Cafe
Hwy 77 & Fifth Street
(620) 878-4487

Doyle Creek Corral
510 North Main Street
(620) 878-4567

DURHAM

Main Street Cafe
517 S. Douglas Ave.
(620) 732-2096

LOST SPRINGS

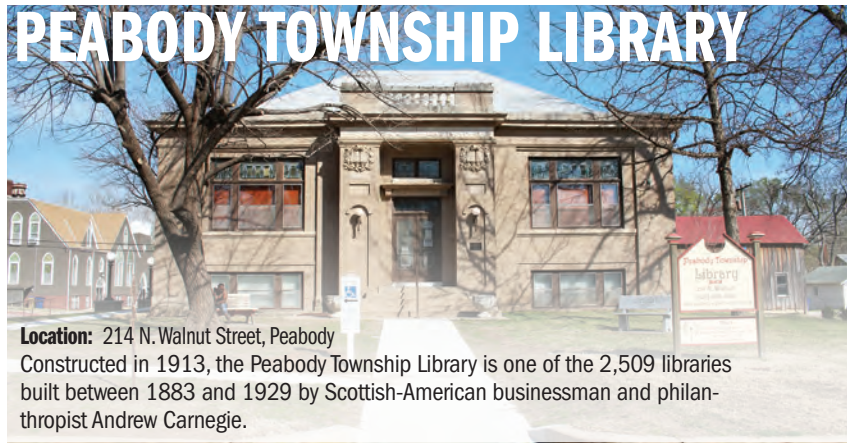
Al's Cafe
101 Berry Street
(785) 983-4827

GOESSEL

Branding Iron Cafe
106 N. Cedar
(620) 367-2363

Lincoln Perk at Bethesda
408 E. Main
(620) 367-2291

PEABODY TOWNSHIP LIBRARY



Location: 214 N. Walnut Street, Peabody
 Constructed in 1913, the Peabody Township Library is one of the 2,509 libraries built between 1883 and 1929 by Scottish-American businessman and philanthropist Andrew Carnegie.

MARION RESERVOIR

Completed in 1968, the Marion Reservoir features 6,160 surface acres of water, surrounded by 6,000 acres of public lands.

The lake is just north of U.S. Highway 56, between Hillsboro and Marion and is maintained by the Army Corp of Engineers for the purpose of flood control.

"We offer fishing, boating, camping, public hunting land, and four campgrounds," said Torey Hett, support service specialist for the project.

Keep in mind, the Marion Reservoir is not to be confused with the smaller body of water to the south, the Marion County Lake.

Camping and picnic opportunities abound with 171 campsites located in four parks: Cottonwood Point, Hillsboro Cove, Marion Cove, and French Creek Cove. Campsites contain picnic tables, grills and/or fire-rings, utility tables, sun-shelters and gravel parking pads.

Facilities at class A parks,

Cottonwood Point and Hillsboro Cove, include electrical hookups, showers, RV dump stations, group camping areas, group picnic areas, playgrounds and beaches.

"Having full hookups is new to the Marion Reservoir in the past two years," Hett said. "They're pretty popular."

There are two official swim beaches on the project, Cottonwood Point Park and on the north side of the dam near the project office. The lake has a couple of natural beaches as well — underneath the Overlook on the south side of the dam, and at Hillsboro Cove Park.

For nature lovers, there are many native trees, wildflowers, and flowering shrubs, as well as many species of birds native to the area for birdwatchers to enjoy.

The one-mile Willow Walk Nature Trail seasons, violent weather, changing land use, and an evolving shoreline have combined to make the Willow Walk Trail an ever-changing trek.

Spend A Day With The Dinosaurs

Minutes South Of Wichita, Millions Of Years Back In Time!

Explore the 14 acre park, featuring over 40 breathing, moving and roaring **life size animatronic dinosaurs!**

Discover the story and **science of Dinosaurs** with over 30 live shows, games and activities.

Laugh with our fearless dinosaur wranglers and **come face to face with The Mighty T-Rex.**

Journey around the world and score a hole-in-one at **Jurassic Golf.**

Sing-a-Long with the **Dinosaur Troubadour** and paleontology's biggest hits!

**FIELD STATION:
DINOSAURS**

Climb to new heights on North America's first challenge dome and take in a **bird's eye view of the dinosaurs!**

Just 10 minutes South of Wichita on Rock Road at Patriot Avenue in Derby!

Purchase tickets online or at the Box Office.

KansasDinos.com



When your expedition is over splash down and cool off at Rock River Rapids. Just 5 minutes away!





BIG WELL MUSEUM

Location: 315 S. Sycamore, Greensburg
Hours: 9 a.m.-6 p.m. Mondays-Saturday and 1-6 p.m. Sundays
Number: (620) 723-4102
Website: bigwell.org

hole. The stairs no longer go to the bottom of the well but it is “still a long ways and quite an experience,” Barnes said. “You’ll get your workout.”

Every week visitors from throughout the 50 states and usually a few foreign countries come to Greensburg to see the world’s largest hand dug well. “We’ve had people from the Middle East,” said Stacy Barnes, executive director of the Big Well Museum. “This year we’ve had people from Ireland, Denmark, Australia, the Philippines, Japan and that’s just this week.”

The steps now go two flights up to an indoor glass observation deck with a 360-degree view of Greensburg.

The well survived the 2007 tornado but the museum had to be rebuilt. On May 26, 2012 during Memorial Day weekend, the Big Well Museum reopened.

Completed in 1888, the big well was 109 feet deep and 32 feet in diameter. The well, built for \$45,000, held 48,000 gallons of water.

The circular wall around the big well now depicts the history of Greensburg from its early pioneers through the tornado.

Debris has been collected in a glass case, video of weather forecasts from the night of the tornado play and there is a memorial with the names of the people who lost their lives to the tornado. People can also listen to audio stories from survivors of the tornado. A card catalog from the old library survived the tornado and is in the museum with the cards still in it.

“This was commonplace back then,” Barnes said. “If a town needed water, this is what they did.”

The town of Greensburg used the well until 1932, and a year later, the state banned the use of open wells as public sources of water. In 1939, the original museum was built.

A pallasite meteor, the largest one in the world, discovered in 1896 by Eliza Kimberly, survived the tornado and is on display.

“I often think if the men who built it could see it now, what would their reaction be?” Barnes said.

Barnes quoted the tagline from a video of the well on the museum’s website. “It’s more than just a big hole.”

Today visitors can walk 50 feet down the spiral staircase of the

ABILENE & SMOKY VALLEY RAILROAD

May—October
 Call or check
 website for more
 information



#3415 STEAM
 ENGINE RUNS
 Adults \$30.00
 Ages 3-11 \$15.00

Diesel Engine runs
 Adults \$15
 Ages 3-11 \$7.50

*DINNER TRAINS • CHARTERS
 SCHOOLS RUNS • RAILBUS TRIPS
 HISTORIC HOMES & BARNS TOURS*

Located in 1887 Rock Island Depot, Old Abilene
 Abilene, KS 2 miles south of I-70



Phone 785-263-1077 or
 1-888-426-6687
 www.asvrr.org/

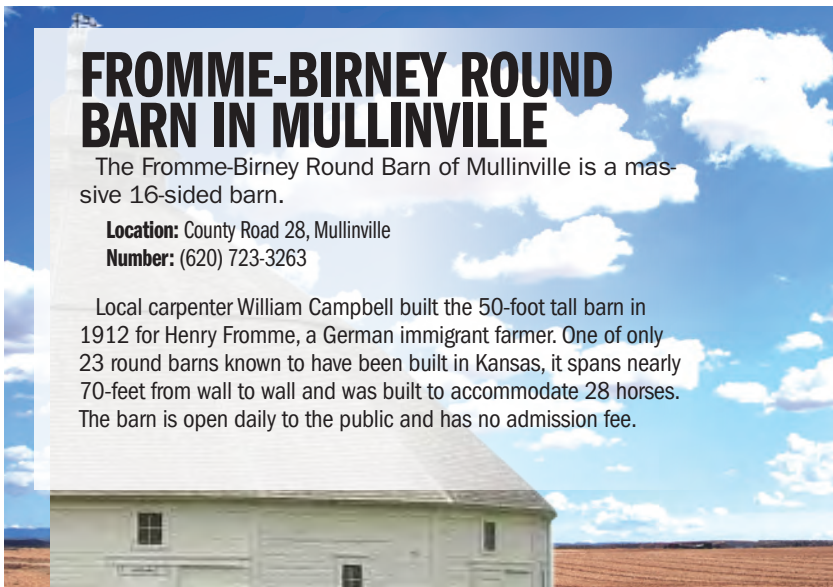
Part of 5-Star Museum District
 All prices & schedules subject to change without notice

FROMME-BIRNEY ROUND BARN IN MULLINVILLE

The Fromme-Birney Round Barn of Mullinville is a massive 16-sided barn.

Location: County Road 28, Mullinville
Number: (620) 723-3263

Local carpenter William Campbell built the 50-foot tall barn in 1912 for Henry Fromme, a German immigrant farmer. One of only 23 round barns known to have been built in Kansas, it spans nearly 70-feet from wall to wall and was built to accommodate 28 horses. The barn is open daily to the public and has no admission fee.



KIOWA COUNTY MUSEUM & SODA FOUNTAIN

Location: 320 S. Main Street, Greensburg
Hours: Tuesdays-Fridays 9 a.m.-5 p.m. Saturdays. 9:30 a.m.-5:30 p.m. The soda fountain is open 2-5 p.m. on Tuesdays-Friday and 9:30 a.m.-5:30 p.m. Saturdays.
Number: (620) 723-1125
Website: kiowacountyksmuseum.org

The Kiowa County Historical Museum, in the LEED platinum, energy efficient Kiowa County Commons, takes visitors through the county's heritage of buffalo, Native American wars and early settlers through the 2007 tornado. There is information and artifacts about interesting characters from Kiowa County history like Eliza Kimberly who discovered the Brenham meteorites, stagecoach operator D.R. "Cannonball" Green, for whom the town of Greensburg is named. There is a working soda fountain that used to be part of Hunter's Drug Store and survived the tornado.



Brookville Hotel since 1870



Family Style Chicken Dinners
 Carry-out & Catering Available

105 E Lafayette Ave • Abilene, Ks
 785-263-2244 • brookvillehotel.com

Please call for reservations. Summer hours in effect soon.

DINING DESTINATION

- | | |
|--|---|
| <p>HAVILAND
 Origins Coffeehouse
 121 N. Main Street
 (620) 862-7171</p> <p>GREENSBURG
 Asian Kitchen
 101 S. Main St.
 (620) 723-9033
 Cannonball Bar and Grill
 403 E. Kansas Ave.
 (620) 723-2866
 Crazy Mule Food and Brew
 106 Main St.
 (620) 723-9025</p> | <p>Kansan Pueblo Nuevo
 801 E. Kansas Ave.
 (620) 723-3057
 Kook's Meat and Deli
 101 S. Sycamore Drive
 (620) 723-2121
 Reggie's Pizza
 114 Main St.
 (620) -723-2200</p> <p>MULLINVILLE
 Country Café
 401 S. Main St.
 (620) 548-2568</p> |
|--|---|

TWILIGHT THEATRE

Location: 200 S. Main Street, Greensburg
Number: (620) 723-1092
Website: twilighttheatre.org

The \$3.5 million Twilight Theatre comes with a digital projector, surround sound and custom stage lighting. Billed as the "Premier Southwest Kansas destination for film and performing arts," the 400-seat auditorium includes a

58 by 27.5 feet movie screen, the largest screen between Wichita and Denver. A bar is featured at PG 13- and R-rated movies. Tickets are \$5 and \$7.



BIRGER SANDZÉN MEMORIAL GALLERY

Location: 401 N. First St., Lindsborg

Hours: 10 a.m. to 5 p.m. Tuesday through Saturday and 1 to 5 p.m. Sunday

Number: (785) 546-2449

Lindsborg comes to life through the lens of prolific painter and printmaker Birger Sandzén.

The Kansas painter and printmaker lived in Lindsborg and created over 3,000 paintings, prints and drawings from 1894 to 1954 — many of which are now held in museums or private collections.

Many of Sandzén's images depict idyllic scenes of Kansas and other prairie landscapes. Residents take a certain pride in seeing their home state appreciated worldwide through Sandzén's artistic lens.

"This is a healthy sign for the interest of art in central Kansas. We're reconnecting to our cultural roots that are truly unique to Kansas," said Cori

Sherman North, curator at the Birger Sandzén Memorial Gallery in Lindsborg. "Sandzén was so prolific, so he was always happy to see his work sold to private collections, people he knew or even to strangers."

At the Birger Sandzén Memorial Gallery, works of its namesake have been displayed since 1957, along with the works of 720 other artists. The gallery also hosts special events, concerts, poetry readings and gallery talks through the year.

Similar to Vincent van Gogh or Paul Cézanne, Sandzén used dabs of bright color to mimic the shimmer of light on a landscape.

Sandzén and art dealer Carl Smalley held exhibitions in the early 1900s on Main Street in McPherson. During that time, McPherson residents had easy access to quality art, which fueled business for many artists.

"This area has a long tradition of appreciating

original art and art created by local artists. Sandzén got together with Carl Smalley and they put on the first exhibition at McPherson High School in 1911," North said. "Artists from all over were invited to exhibit, and when they showed at the exhibitions, things were generally for sale as well. People who went to just see things could purchase right there, and I think a lot of them did."

In addition to paintings, Sandzén created countless prints and lithographs with the Prairie Printmakers, which were well received by the McPherson County public in the early 1900s.

"The Prairie Print Makers were known for making lithographs in the 1930s. It was low cost, but original art," North said. "These became even more popular for local people to collect because they could have a Sandzén print, or a Norma Bassett Hall woodcut for a low cost."



MCPHERSON MUSEUM

Location: 1111 E. Kansas Ave., McPherson

The McPherson Museum is home to a wide range of the city's history. From J. Willard Hershey's first synthetic diamonds, Harvey Ninger's meteorites and J. Z. Gilbert's La Brea fossils to local and world history and archives, the museum covers many topics of interest. Learn about the McPherson Globe Refiners, the first winner of the Olympic gold medal in basketball, as well as what life has been like on the prairie through the years. Rotating exhibits ensure no visit is the same as the last.

MAXWELL WILDLIFE REFUGE

Location: 2565 Pueblo Road, Canton
Number: (620) 628-4455

The 2,800-acre Maxwell Wildlife Refuge is home to 70 elk and 160 bison, which can be seen up close on one of the refuge's tours or special events. The Friends of Maxwell have designed programs and activities at the refuge since 1993 and work with the Kansas Wildlife and Parks to teach about the wildlife, history of the area and the importance of preserving the environment. For more information, contact the Friends of Maxwell by visiting www.maxwellwildliferefuge.com or calling the tour center at 620-628-4455.

MOUNDRIDGE MUSEUM COMPLEX

Location: 402 W. Cole St., Moundridge
Hours: Open by appointment
Number: (620) 345-8287
Website: moundridgekansasmuseums.com

At the Moundridge Museum Complex, you can explore buildings, tools and artifacts from the town's history. The first home to be constructed in Moundridge has been restored and is now the Cole House Museum. The Agriculture Museum holds 1900s tractors and tools and the Blacksmith Shop is an operational facility open to visitors. The Heritage Museum holds displays related to military, religious, business and family history in Moundridge.



LOUIE'S

SERVICE CENTER, INC.

P.O. BOX 337 • 782 CHEROKEE RD. • INMAN, KS
620-585-2763



the well
Experience The Well!

Coffee • Espresso • Tea
 Smoothies • Pastries • Cupcakes
 Sandwiches • Soups • Salads

(620) 241-1840
 101 N MAIN STREET
 MCPHERSON, KS 67460



SHOW YOUR TEAM SPIRIT!

Great selection of apparel for everyone in the family!

Artshirt
 gear for sport

www.artshirt-gearforsport.com

(620) 241-4101
 211 N MAIN STREET
 MCPHERSON, KS 67460



SUMMER
 We've got what you need this **FOR LESS!**

PICNIC REUNIONS THE LAKE

Your Satisfaction Guaranteed!

SPECIALTY ITEMS

- Fresh Ground Hamburger
- Soda Pop/ Hot Dogs/ Chips
- Fresh Baked Goods
- Old Fashioned German Sausage
- Specialty Cheeses
- Paper Plates
- Napkins
- Plastic Silverware
- BBQ Sauce
- Fanestil Meat Products
- Large Bulk Food Dept.

And More!

Welcome to **Family Owned Meridian Grocery**

101 S. Meridian, Newton (1 mile off US 50 West)
316-283-4374
Mon-Sat. 8am-7pm

www.meridiangrocery.com

MasterCard VISA Union Cards Accepted



MCPHERSON COUNTY MURALS

Driving the streets of McPherson County, you can catch a glimpse of color year-round in the murals displayed on several of its buildings. Featuring subjects from scenes of native animals to depictions of the county's history, the paintings draw the eye to discover what can be appreciated about life in central Kansas.

A mural painted by Stan Herd graces the side of the Inman Dental Center (113 S. Main Street, Inman). The mural depicts the town of Inman as it stood around 1910, and some of the buildings seen in the mural are still standing.

An advertisement for "Goebel's Gifts and Sundries" is painted on the side of the building housing Mockingbird Vintage and Estates (101 S. Christian Ave., Moundridge). The mural shows a scene of patrons gathered at an old-fashioned soda fountain.

According to the McPherson Convention and Visitor's Bureau, there are six murals that show a piece of McPherson's history located around the city.

The "All Schools Day" mural seen at 123 S. Main Street commemorates the 100th anniversary of All Schools Day, which started in 1914.

The "Central Christian College" mural, which can be seen at the intersection of Main and Marlin Streets, is painted on a canvas and represents the college's mission.

At the intersection of Sutherland and Main Streets, the Maxwell Wildlife Refuge Mural entitled "Bison" was painted by local artist Matthew Richter in 2013 and showcases Kansas' land, native animals and the scenery at Maxwell Wildlife Refuge in Canton.

McPherson college is recognized for the history of its four-year degree program for automotive restoration technology in the "McPherson College Auto Restoration Mural" found at the intersection of Euclid and Main Streets.

The "McPherson Globe Refiners Mural" at Ash Street and Kansas Avenue is an image honoring McPherson Globe Refiners, the basketball team, which had 7 players from McPherson, that won the gold medal in basketball's first inclusion in the

Olympics in 1936.

McPherson County veterans are remembered in the "Veterans Memorial Mural" at 401 N. Main Street.

The restored Coca-Cola advertisement on the McPherson Opera House at 219 N. Main display the iconic red and white logo on the north side of the building.

The "Easy Rider" mural at 304 N. Maple uses shades of gray and black to create an image of two motorcycle riders.

Another depiction of motorcyclists is placed on the north wall of the building that houses the Kansas Motorcycle Museum at 120 N. Washington St. in Marquette. Created by Central Christian College's art students, the piece celebrates Kansas' scenic byways.

Kathy Richardson, co-owner of the Small World Gallery (127 N. Main St., Lindsborg), said, "As a member of the Lindsborg Convention and Tourism Advisory Board, I know from experience that public art imprints a powerful sense of place on visitors. I see this happen every day on Main Street. Visitors make memories with Lindsborg's public art."

One of the more recent murals to appear in McPherson County is the painting advertising Broadway RFD's production of "The Wizard of Oz," which was performed in 2015. The mural, located on the south wall of 115 S. Main St. in Lindsborg, has the Wicked Witch of the West looming from storm clouds over the small figures of Dorothy and her dog, Toto.

"As a resident of Lindsborg, I see public art as symbol of welcoming," Richardson said. "I interpret public art as a sign that thinking and reflection are valued and encouraged. As a Lindsborg business owner, I know from both reading and talking with customers that public art is a sign of an economically healthy community. To my customers, public art says that the community cares about its appearance."

DINING DESTINATION

MCPHERSON

Craft Coffee Parlor
120 N. Main Street
(620) 755-5212

Imperial Garden Express
1362 N. Main Street
(620) 241-3688

JD's Kwik Burger
629 W. Kansas Ave.
(620) 241-4545

Main Street Deli
108 S. Main Street
(620) 241-1888

Mr. B's Family Restaurant
1101 W. Kansas Ave.
(620) 241-7812

Woodies Smokehouse
206 S. Centennial Drive
(620) 245-5820

Hank's Place

217 N. Ash Street
(620) 241-1090

Los Portales
1100 W. Kansas Ave.,
McPherson

Mac City Limits Grill and Bar
306 N. Maple Street
(620) 241-6484

Neighbors Cafe
204 S. Main Street
(620) 241-7900

Tres Amigos Mexican Restaurant
121 W. Marlin Street
(620) 245-0505

CANTON

Sodas 'N' Suds
116 S. Main Street
(620) 350-8006

Three Sisters Tea & Treasures
105 N. Main Street
(620) 628-4484

LINDSBORG

Brick House Grill
201 Harrison Street,
(785) 227-3200

Courtyard Bakery
125 N. Main Street,
(785) 227-3007

Jalisco's Mexican Restaurant
107 N. Main Street
(785) 227-8987

The Ol Stuga
119 S. Main Street
(785) 227-8762

The Old Grind

113 N. Main Street
(785) 212-6077

Swedish Crown
121 N. Main Street
(785) 227-8422

Swedish Country Inn
112 W. Lincoln Street
(785) 227-2985

The White Peacock
124 S. Main Street
(785) 212-6108

Farley's Bar and Grill
101 N. Main Street
(785) 212-6030

MARQUETTE

City Sundries
104 N. Washington Street
(785) 546-2234

PRATT COUNTY HISTORICAL SOCIETY MUSEUM

Location: 208 S. Ninnescah, Pratt
Hours: 1-4 p.m. Mondays-Fridays, 1-3 Saturdays-Sundays
Number: (620) 672-7874



The Pratt County Historical Society Museum has an array of artifacts covering the history of Pratt and Pratt County.

From the earliest county settlers and the development of cities, the museum is a depository of historical items covering everyday life including a replica of an old time Main Street, farm life, World War II and the Pratt Army Air Field, and the Miss Kansas Pageant, conducted in Pratt since 1955.

An excellent museum just got better. In summer 2016, a new display of more than 800 Native American artifacts plus 200 spear and arrow points and scraping stones opened.

It is one of the finest collections of Native American artifacts in the state, Charmaine Swanepoel, museum curator, said.

The artifacts belonged to Pratt native Jon Hartman, who started collecting when he was 8 and spent the next 60 years gathering artifacts, mostly in the Southwest.

He also collected some items in Pratt County and purchased an entire collection of Alaskan Native American artifacts. Many of the items are from the pre-reservation era. He went on many archaeological digs and collected from other collectors, garage sales and flea markets.

His collection includes a lot of pottery, with one piece more than 1,000 years old, clothing with intricate beadwork, weapons, headdresses, toys and the list goes on and on. When Hartman died in 2014, he wanted the entire collection to remain in Pratt. A corner of the museum has been remodeled with ample display cases, special lighting and a

new security system.

Even with the new space, the Hartman collection is so big it cannot be shown all at once. Items on display will be rotated to give visitors a chance to see the collection over a period of time.

In the main part of the museum, period rooms offer a peek into life as it once was. There is a schoolroom with a teacher and pupils and a judge presiding over a courtroom. Imagine having a tooth pulled in an old-fashioned dentist's office or ordering a soda in an old-time drugstore. Ask "Central" to connect the wires so you can use that new-fangled device, a telephone.



Holiday Inn Express and Suite
 2302 E. Kansas Ave.
 620-241-5566 or 1-800-HOLIDAY



Days Inn
 2300 E. Kansas Ave.
 620-241-3690

4 great hotels
 in
 McPherson



SureStay
 HOTEL
 by BEST WESTERN
 2211 E. Kansas Ave.
 620-241-5343



FAIRFIELD
 INN & SUITES[®]
Marriott[®]
 2270 E. Kansas Ave.
 McPherson, KS 67460
 620-504-5353
 Opening May 2018



KANSAS DEPARTMENT OF WILDLIFE, PARKS & TOURISM

Location: 512 S.E. 25th Ave., Pratt

Hours: 8-5 Monday-Friday, also 9-4 June-August

Number: (620) 672-0776

One can see numerous displays, dioramas and exhibits of Kansas-native birds, fish, mammals and reptiles at the Kansas Department of Wildlife, Parks and Tourism Education Center. Best of all, it's free.

The emphasis of this center is to help people discover the wildlife of Kansas. The facility's winter diorama provides a glimpse of how wildlife deal with the snow and cold of Kansas winters. Another area – the grassland display – depicts the three grasslands (short, mixed and tall) of Kansas and wildlife common to each region, including two rare black-footed ferrets.

The nearby raptor exhibit features owls, hawks, falcons and the strangely named kites, all featuring hooked beaks and razor-sharp talons. In all, more than 128 species of birds and their eggs can be found here.

Mounted big game heads are on display in the hallway

featuring a large bison, antelope and elk.

The wetland wall display includes information and pictures about Cheyenne Bottoms, one of the five most important wetlands in North America.

One of the most popular areas is the Aquarium Room. It contains 12 400- to 600-gallon aquariums. Each displays fish species native to Kansas or that have been successfully introduced to the state. They include crappie, sunfish, catfish, walleye and members of the bass family. Large snapping turtles are also on display and a new darter exhibit is under development.

On the east wall are two panels – the first featuring the early history of the Pratt Fish Hatchery, the second featuring details on the program of rearing catfish from egg to fully-grown fish. There's also a working model of the incubating trough developed by Seth Way, a longtime superintendent of Kansas' first fish hatchery. Tours of the hatchery are available by prior arrangement. Call 620-672-5911.

Throughout the aquatic room are drawings of native fish by Joseph R. Tomelleri.

Another display room features KDWP law enforcement equipment and confiscated illegal hunting and fishing equipment.



GREEN SPORTS COMPLEX

Location: 2007 E. Sixth Street

Number: (620) 672-2936

Website: prattrecreation.com/Parks/Green-Sports-Complex

Green Sports Complex is where baseball and softball happen in Pratt, with a tournament scheduled almost every weekend during the summer. It's also the home field for Pratt High sports, with three softball fields and one baseball field. Besides that, it's a beautiful park. Located on East Sixth Street, the easiest way to find it is to turn south on Fincham Road at the Wal-Mart corner. When the road ends, turn west and you're there.



THE VERNON FILLEY ART MUSEUM

Location: 421 S. Jackson Street, Pratt

Hours: 10 a.m.-4 p.m. Tuesdays through Fridays and 1-4 p.m. on Saturdays

Number: (620) 933-2787

Website: vernonfilleyartmuseum.com

The Vernon Filley Art Museum showcases a large permanent collection of Emily Filley and her late husband, as well as visiting shows by artists of regional, national and international recognition in a state-of-the-art facility.

B-29 BOMBERS PRAIRIE MUSEUM

Website: prattveteransmemorial.org

B-29 Bombers on the Prairie Museum, at the Pratt Regional Airport north of town on U.S. Highway 281, commemorates the Pratt Army Airfield, which existed during World War II to test the new bombers rolling off the assembly line in Wichita. A museum is being developed in the old parachute building, which is open on Sunday afternoons during the summer or by appointment.

Step into the Victorian Era ...



Warkentin House Museum



Take a glimpse into the way the Warkentin family lived. Today, 80% of the family's original furnishings remain and the house features beautiful architectural details and craftsmanship.

Summer Hours
1-4:30 p.m. Wed.-Sun.

Through Aug. 26

201 E. Sixth St., Newton • 316-284-3642

Admission: \$4 adults; \$2 children • Private tours available by appointment



DAVE BUMP - General Contractor
www.dabbuildingsystems.com

- Pre-engineered Metal Buildings
- Post Frame Buildings
- Metal Roofs for Homes
- Mini Storage



LICENSED | INSURED

Nationwide Delivery

(316) 322-8711 • (866) 451-8711

MCPHERSON *Opera House*

219 S. MAIN 620-241-1952

**Kansas' Premier Performance
Venue Featuring
First-Class Entertainment**

**2018-2019 Season Schedule
Announced in August 2018**

**Rental Spaces for all Occasions
Perfect for Weddings & Conferences**



FOR MORE INFORMATION VISIT
WWW.MCPHERSONOPERAHOUSE.ORG

DINING DESTINATION

PRATT

Dragon's Den

713 E. First St.
620-672-7563

Rick's Restaurant

1805 E. First St.
620-672-5900

Uptown Café

202 S. Main St.
620-672-6116

El Dos De Oros

722 S. Main St.
620-672-6106

Playa Azul

1413 E. First St.
620-672-1217

Humble Pie

720 E. First St.
620-672-6800

Chapeau

701 N. Main St.
620-672-2012

Legends Pub and Grille

109 S. Park St.
620-672-5456

Storm Cellar Pub and Grub

701 E. First St.
620-933-2525

Famous Servateria

1123 E. First St.
620-672-5341

Blue Moon Coffee House

210 S. Main St.
620-508-6232

Woody's Sports Bar

418 S. Main St.
620-672-7744

El Trancazo

703 N. Main St.
620-508-6307



Towanda, KS – Make it home.

Ruth Engels Photography

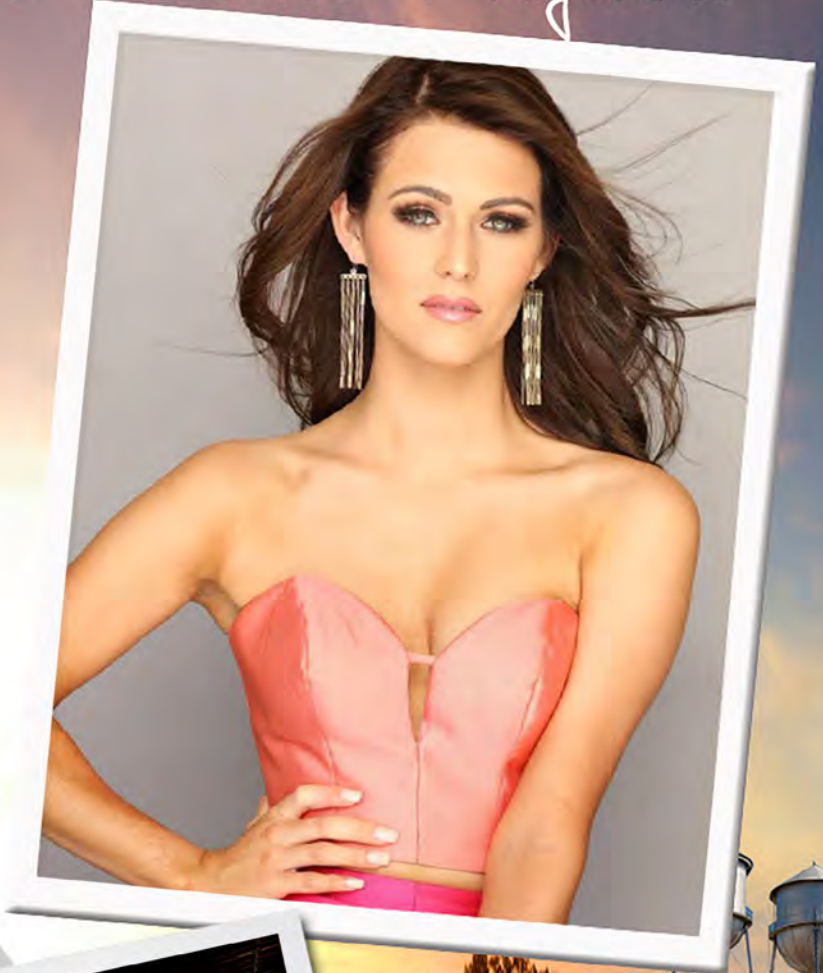
PRATT



Home of the Miss Kansas Pageant



Outdoor Recreation



Unique shopping experience



270 acres of parks and walking paths



4 Museums

Pratt

Has Something for You!

www.PrattKansas.org

BOTANICA GARDENS

Location: 701 Amidon Street, Wichita
Hours: Open 9 a.m.-5 p.m. Mondays through Saturdays year-round, open until 8 p.m. on Tuesdays and Thursdays April-September and open 1-5 p.m. Sundays April-October.
Number: (316) 264-0448, www.botanica.org

Botanica Gardens in Wichita features more than 4,000 species of plants (both native and new to the region) in 30-plus themed gardens spanning 18 acres of land in downtown Wichita. Open year-round Mondays-Saturdays, Botanica is also one of the largest museums of horticulture in the region.

Featuring everything from educational opportunities to special entertainment events to the natural beauty of the gardens, Botanica Director of Marketing and Communications Craig Davis said there is something for everybody, though the opening of the Downing Children's Garden (featuring a working water pump, giant tree house and musical maze) five years ago has helped attract one particular crowd.

"By far, that has really awakened the

family community and so many of our events and activities revolve around the family, certainly," Davis said.

Additionally, each Thursday through the summer is Family Game Night at Botanica.

Other special events, which account for one-fourth of Botanica's annual attendance, include Tuesdays on the Terrace with live music from 6 to 8 p.m. Tuesdays from June through September.

Seasonally, Botanica also hosts Illuminations from Thanksgiving through New Year's, transforming the gardens into a winter wonderland with more than one million lights.

Davis noted there really isn't a bad time to come visit, as the seasonal variation adds to the variety of what the garden offers, but he noted there are

certainly some perks to stopping by in the spring.

"With the blooming season, we just had more than 60,000 tulips that really kicked off in the latter part of March...and into May, actually," Davis said.

The recently opened Chinese Garden of Friendship is a tribute to Wichita's sister city of Kaifeng, HeNan, China.

"We want to enlighten people, educate and we want to really feature highly the cultural experiences and the beauty that's involved with horticulture and give back," Davis said.

"I think that you come, you experience it and you leave it with a new appreciation for anything that's green; the caring of it and how delicate it really is."

OLD COWTOWN MUSEUM

Location: 1865 Museum Blvd. Wichita **Hours:** 10 a.m.-5 p.m. Tuesdays-Saturdays noon-5 p.m. Sunday **Number:** (316) 219-1871

Check out this open-air living history museum. The Old Cowtown Museum is a moment frozen in time. The museum offers visitors a glimpse of a town 23 acres off of the Chisholm Trail during 1865 through 1880.

With dirt roads, furnishing and costumed staff, this museum gives visitors a true cowtown feel. The museum has a 10,000-piece permanent collection of period artifacts. With 54 historic buildings, the museum takes at least an hour and a half to tour.

The Cowtown's program educates visitors on the vibrant history of the Wichita area. Explore the growth of Wichita from just a settlement of hopeful pioneers, through the stages of a cowtown into the agricultural and manufacturing area that it still is today.

Established in 1952 and operated by Wichita Cowtown, Inc. and the city of Wichita Division of Arts & Cultural Services, the Old Cowtown Museum has achieved the highest national recognition available to a museum by being awarded accreditation by the American Alliance of Museums, which only 3 percent of the nations museums has.

The museums, residential area offers a look at the living arrangements during the 1870s. Built in 1874, Marshall M. Murdock home is a representation of the era's middle-class homes, more comfortable than one might expect.

Heller Cabin is the newest structure opened to the public, obtained in October 2009. It is the first building visitors encounter when they enter the historic Cowtown. The addition of Heller Cabin is significant as it is

considered one of the top 10 intact structures in the United States from the settlement period. It is also one of Cowtown's best documented properties because it was photographed, measured and sketched and all of its parts were numbered before it was dismantled and brought to Cowtown. Heller Cabin was built by Civil War veteran Leonhard Hoffman, who expertly cut and pieced the logs together.

Cowtown also offers a look at the 1870s business district with such structures as a grain elevator, drug store and train depot. By 1872, there were three banks in Wichita. Visitors can take a gander at the First Arkansas Valley Bank.

Don't forget the to visit S.G. Bastian and Sons Merchantile for toys, souvenirs and food.

DINING DESTINATION

BENTLEY

Bentley Corner Bar & Grill

102 N. Wichita
316-796-0233

COLWICH

Syl's

205 W. Wichita Ave.
316-796-1044

ANDALE

Brunin Family Restaurant

320 Main St.
316-445-2699

Little Bear Sports Bar

315 Main St.
316-444-2416

GARDEN PLAIN

Stern Bar & Grill

428 N. Main St.
316-535-8889

MAIZE

Granite City Food & Brewery

2661 N. Maize Rd.
316-721-8500

Knolla's Pizza

4041 N. Maize Rd.
(316) 722-4662

Nancy's Amazing Sandwiches Inc

5125 N. Maize Rd.
(316) 722-9904

Tequilas Mexican Restaurant

218 W. Main St.
(316) 755-9305

Big Larry's Burgers

328 S. Meridian Ave.
(316) 755-9858

Jerry's Tex-Mex Grill

556 N. Meridian Ave.
(316) 613-8115

Spirits Pub

231 E. Main St. B.
(316) 351-5711



MID-AMERICA ALL-INDIAN CENTER

Location: 650 N. Seneca, Wichita **Hours:** Tuesdays-Saturdays 10 a.m.-4 p.m. **Number:** (316) 350-3342

TANGANYIKA WILDLIFE PARK

Location: 1000 S. Hawkins Lane, Goddard **Hours:** May through Labor Day: 9 a.m.-5 p.m. daily. April, September, October and first weekend of November: 10:30 a.m.-5 p.m. Fridays, Saturdays and Sundays **Number:** (316) 794-8954 **Site:** <http://www.twpark.com>

EXPLORATION PLACE

Location: 300 N. McLean Blvd., Wichita **Hours:** 10 a.m.-5 p.m. Mondays-Saturday, Noon-5 p.m. Sundays **Number:** (316) 660-0600 **Site:** www.exploration.org

DINING DESTINATION

PARK CITY Auntie C's Restaurant

425 E. 61st St. N.
(316) 744-7244

Park City Chopstix

1615 E. 61st St. N.
(316) 744-7849

CHENEY

Hank Is Wiser Brewery
213 N. Main St. (316)
542-0113

Benny's Burgers & Shakes LLC

610 N. Main St.
(316) 542-9934

D'Mario's Pizza

1635 Cheney Road
(316) 542-3126

ANDOVER

Poplar Restaurant
125 US-54
(316) 733-9996

Golden Garden Restaurant

544 N. Andover Road
(316) 733-2852

Las Palmas Mexican Restaurant

119 W. Central Ave.
(316) 733-2332

Timbuktu Bar & Grill

1251 N. Andover Road
(316) 733-5630

Metro Bistro

321 S. Andover Road
No. 100
(316) 733-4202

Hereford House

1400 Terradyne St.
(316) 733-7800

Bob & Luigi's

325 Central Ave.
(316) 733-1111

Sakana Japanese Grill & Sushi

626 S. Andover Road
(316) 558-8805

Renew Consign & Cafe

403 W. Central Ave.
(316) 210-5951

GARDEN PLAIN

Frosty Treat

203 W. Harry St.
316-535-8303

Stern Bar & Grill

428 N. Main St.
316-535-8889

GODDARD

Ginger Asian Cuisine

19894 W. Kellogg Drive
3160-550-6338

We're Not JUST Pizza - Give Us a Try

Delicious Food, Great Prices, Family Friendly Dining
The Largest Menu Selection
in Andover

Wings • Burgers • Pizza • Loafers
Steaks • Spaghetti • Subs

FULL BAR AVAILABLE
316-733-9996

127 W. Hwy 54
Andover, KS

BEHIND FLINT HILLS
WINE & SPIRITS

www.poplarpizza.com



ESTABLISHED 1982. BUFFALO NY

DINE IN / PICKUP / TAKEOUT / DELIVERY



Luxurious 1905, 25 room mansion
& gardens featuring original
furnishings & Edison lighting.

Enjoy one of our daily continuous
guided tours 10-4 Mon-Sat and 1-4 Sun.

Admission \$10 Adults, \$5 children age 6-16
& youth groups, \$7.50 groups 10 or more.



1105 N. Buckeye Ave • Abilene, KS • 785-263-1084

Visit us online at www.seelyemansion.org



KANSAS STAR CASINO

Location: Interstate 35 at exit 33, Mulvane

Open 24 hours. No cost to enter. Gaming, food and beverage costs vary.

Number: (316) 719-5000

Website: kansasstarcasino.com

Kansas Star Casino Event Center Hotel is the destination for high-energy gaming, unforgettable entertainment and distinctive dining. The property offers more than 1,750 hot slot machines, 50 table games and an eight-table poker room. When you visit, make sure to come hungry. From signature fine dining and USDA Prime grade steaks at Woodfire Grille, to endless options at the Kitchen Buffet, Asian fusion at An Pho and even more, Kansas Star has something to satisfy every craving. Kansas Star also has the facilities to make your next big event unforgettable. An over 53,000-square-foot meeting and convention space is the perfect location for business meetings, holiday parties, trade shows and weddings. The casino offers on-site catering and other convenient amenities to make your experience at Kansas Star as seamless as possible. The Kansas Star Casino offers entertainment for everyone. The casino is home to a multi-purpose arena, where customers can enjoy national touring entertainment, sporting and equestrian events. Many comedians come from all over the country to perform at the Kansas Star Arena on the weekends.



KANSAS WHEAT FESTIVAL

Location: Wellington

Second week in July. \$3 festival button.

Number: (620) 326-7466

Website: wellingtonkschamber.com/kansas-wheat-festival

Kansas is known for its rolling fields of golden wheat – The Wheat Capital of the World. Sumner County is the No. 1 wheat-producing county in Kansas. The Kansas Wheat Festival is a post-harvest event that will celebrate its 118th year in 2018. The festival began in its inaugural year, 1900, as the Sumner County Jubilee in honor of a bumper wheat harvest. On April 26, 2012, an official proclamation was issued by the state of Kansas making Wellington's wheat festival the official Kansas Wheat Festival. Today the Kansas Wheat Festival is the premier fundraising event for the Wellington Area Chamber of Commerce/CVB and supports the activities of community businesses year round. Thousands of people come from all over the region to enjoy music, food and events for the entire family. According to Wellington Chamber of Commerce Director Kelly Ford, "The 118th Annual Kansas Wheat Festival will be held July 11-15 in Wellington, KS. This week is a family tradition celebrating wheat harvest, family and fun. It offers various events for everyone, such as a car show, arts and crafts fair, parade, live concerts, food trucks, carnival and much more." The five day event features everything that you expect from the heartland; music, art showcases, agricultural displays, and carnival rides.

PANHANDLE RAILROAD MUSEUM

The Panhandle Railroad Museum includes engines, old spittoons, various furniture pieces used throughout the Sante Fe system, uniforms and safety items, and clocks and watches, which were vital to the safe movement of trains before the signal system was put into use.

Location: 507 Lake View Road, Wellington

Hours:

Tuesday - Thursday: 1:00 - 7:00 p.m. Fridays
12:00 - 7:00 p.m. Saturdays 10:00 a.m. -
7:00 p.m. Sundays 10:00 a.m. - 5:00 p.m.

Number: (620) 434-5454

WELLINGTON LAKE

Located west of Wellington, Wellington Lake has 674 acres of surface water and 10.2 miles of shoreline. Families from all around Sumner County drive to the lake to picnic, fish or to swim off its public beaches. Recreation permits are required. There are also areas for camping and boating.

Location: 425 E. Harvey Ave.,
Wellington

Hours: 10 a.m.-4 p.m. Tuesdays-
Saturdays

Number: 620-399-8611

CHISHOLM TRAIL MUSEUM

Wellington has a rich frontier heritage dating back to 1871, shortly after cattle began being driven from Texas across the Red River and Indian Territory to Abilene in 1867. The trail passed seven miles west of Wellington, from Caldwell to Wichita, and on to Abilene. The museum library contains numerous enlarged historic photographs. The museum documents military history, the general store, railroad, dolls, automobiles, doctors office and has a sewing room.

Location: 502 N. Washington
Ave., Wellington

Hours: Monday - Saturday
10:00 a.m. - 4:30 p.m.

Number: 620-326-3820

Website: [chisholmtrailmu-
seum.com](http://chisholmtrailmuseum.com)

WYLDEWOOD CELLARS WINERY

Location: 119th/53 Highway just
west of Interstate 35, at exit 33

Hours: 9 a.m.- 6 p.m., Mondays
through Saturdays and noon-5 p.m.
Sundays.

Number: (316) 554-9463

Free tastings of wines, jellies and homemade fudges are offered seven days a week. Over 45 wines are available at the very sweetness level from the very dry to the sweet, dessert wines, signature Elderberry and even a Mead (honey wine).

DINING DESTINATION

ARGONIA

Argonia Mart & Cafe
509 N. Main St. S.
620-435-6995

CALDWELL

Last Chance Bar & Grill
30 S. Main St.
620-845-2434
The Red Barn
624 S. Main St.
620-845-2171
The Shack
23 E. Central Ave.
620-845-2626

CONWAY SPRINGS

Au'Dean's Den
113 E. Spring Ave.
620-456-2749
Hired Man's Grocery & Grill
424 N. Fifth St.
620-456-3663

MULVANE

Calabrone's Italian Restaurant
1226 S.E. Louis Drive
316-866-2803
Luciano's
216 W. Main St.
316-777-0045
Vautrot's Cajun Goods
222 N. Second St.
316-425-7071
Will and Mike's
104 W. Main St.
316-239-1848

OXFORD

Angie D's
218 W. Main St.
620-455-9906

Muffin Top Bakery & Confections
113 N. Main St.
620-892-2048

WELLINGTON

Andy's Grill & Bar
1604 N. A St.
620-326-2776
Barefoot Jerry's
217 N. Washington Ave.
620-326-6666
Daylight Donut Shop
110 S. Washington Ave.
620-326-2840
The Dore
114 N. Washington Ave.
620-326-7611
El Chile Verde
119 W. Harvey Ave.
620-440-5008
Fabiola's Restaurant
302 N. Washington Ave.
620-326-6554
Good Taste Chinese Restaurant
1311 E. 16th St., Suite 2
620-399-8401
The Great Wall
1022 W. Eighth St.
620-326-8688
No. 7 Coffee House
115 S. Washington Ave.
620-326-6777
Pastime Bar
424 S. Washington Ave.
620-399-8618
Penny's Diner
1104 E. 16th St.
620-326-8191



BARTLETT ARBORETUM

Location: Belle Plaine
Hours: By appointment or for special events.
Number: (620) 488-3451
Website: bartlettarboretum.com

One of Sumner County's biggest marvels, the Bartlett Arboretum, is in Belle Plaine. On the west end of town, along Kansas Highway 55, "the arb," as it's known locally, has been in Belle Plaine for more than 100 years. Started by Dr. Walter E. Bartlett in 1910, the Bartlett family owned and cared for the arb for several generations. Since 1997, Robin Macy has been the steward of the property. She, along with numerous volunteers – known as Soil Sisters and Soil Brothers, keep the arb looking like the jewel that it is. During 2010, the centennial

year for Bartlett Arboretum, it became the first landscape in Kansas history to garner a spot on the National Registry of Historic Places. The arboretum is home to a host of trees and plant life from across the globe, like the Japanese maple tree, the largest one of its kind in the state of Kansas. In the spring, the arb truly shines and sings. The literal singing is usually handled by the various musicians that take the stage in the center of the arb during one of its many events through the year. From the spring to the fall, the Tree House Concert Series brings in artists of all kinds, from small, bluegrass acts to classical concerts.

HESSTON

HARVEST THE GOOD LIFE

Visit our renowned Dyck Arboretum
New Aquatics Center & Splash Park
18-Hole Golf Course
Disc Golf Courses
Shopping & Eating
200 Sq. Acres of Parks & Recreation

HESSTON IS A PLACE WHERE
INDUSTRY, RECREATION AND
FAMILIES BLOSSOM

www.hesstonks.org
620-327-4102

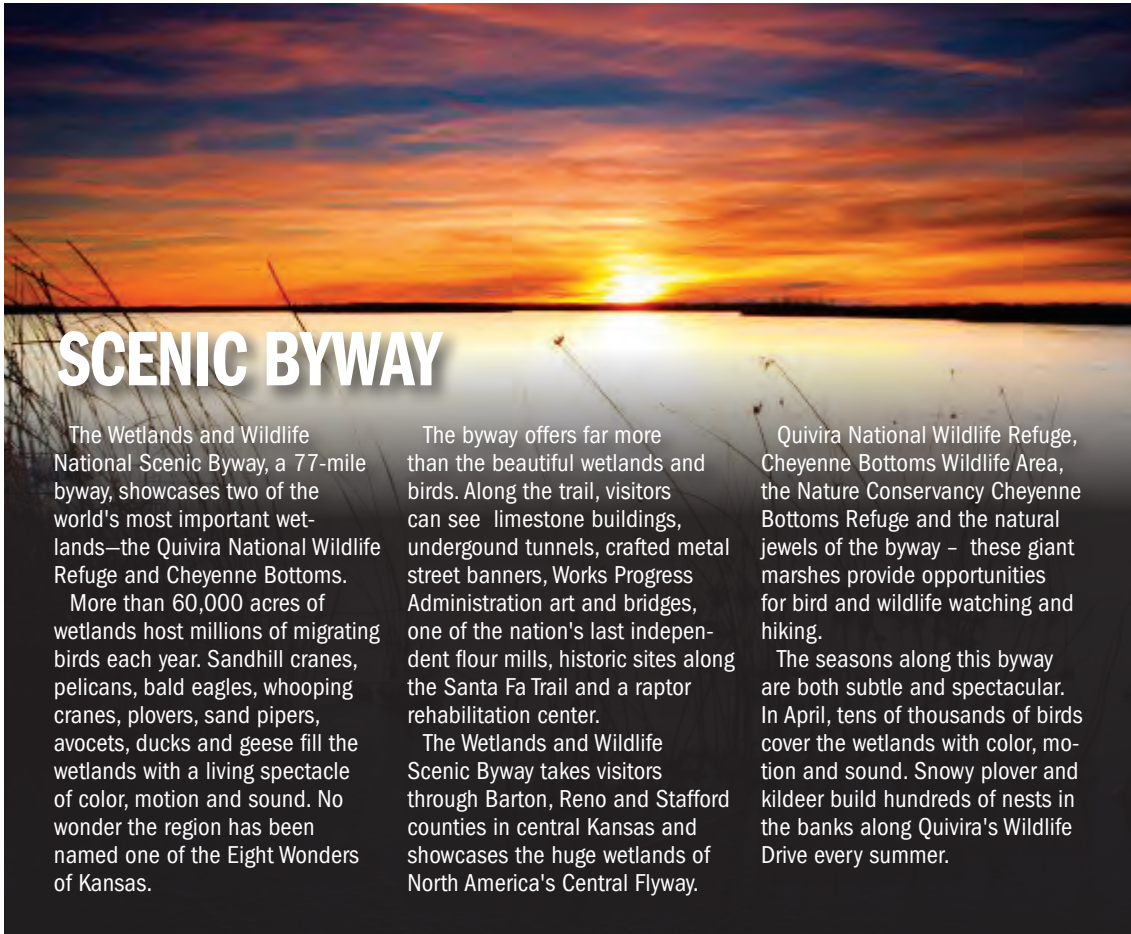
ALL PARTS AUTO SALVAGE

- ★ Quality Used Parts for All Makes and Models
- ★ New After-market Parts
- ★ Ask us to find the parts you can't!!!

MILITARY
DISCOUNTS
AVAILABLE

3501 S. Broadway Wichita
316-522-2251
WE BUY CARS!

The Official Home of
Cars 4 Christmas  **Cars 4 Heroes** 



SCENIC BYWAY

The Wetlands and Wildlife National Scenic Byway, a 77-mile byway, showcases two of the world's most important wetlands—the Quivira National Wildlife Refuge and Cheyenne Bottoms.

More than 60,000 acres of wetlands host millions of migrating birds each year. Sandhill cranes, pelicans, bald eagles, whooping cranes, plovers, sand pipers, avocets, ducks and geese fill the wetlands with a living spectacle of color, motion and sound. No wonder the region has been named one of the Eight Wonders of Kansas.

The byway offers far more than the beautiful wetlands and birds. Along the trail, visitors can see limestone buildings, underground tunnels, crafted metal street banners, Works Progress Administration art and bridges, one of the nation's last independent flour mills, historic sites along the Santa Fa Trail and a raptor rehabilitation center.

The Wetlands and Wildlife Scenic Byway takes visitors through Barton, Reno and Stafford counties in central Kansas and showcases the huge wetlands of North America's Central Flyway.

Quivira National Wildlife Refuge, Cheyenne Bottoms Wildlife Area, the Nature Conservancy Cheyenne Bottoms Refuge and the natural jewels of the byway – these giant marshes provide opportunities for bird and wildlife watching and hiking.

The seasons along this byway are both subtle and spectacular. In April, tens of thousands of birds cover the wetlands with color, motion and sound. Snowy plover and killdeer build hundreds of nests in the banks along Quivira's Wildlife Drive every summer.

DINING DESTINATION

SAINT JOHN

Poppy's Pizza

302 S. Main St.
620-549-6110

Pueblo Nuevo

806 E. First St.
620-549-3366

Sandwich Shop

434 N. Highway 281
620-234-5408

Joan's Cafe

454 Martin Ave. Highway 50
620-234-6958

Paul's Deli

309 S. Main St.
620-234-5239

The Refuge Bar & Grill

205 S. Main St.
620-268-5032

Elroy's Pizza

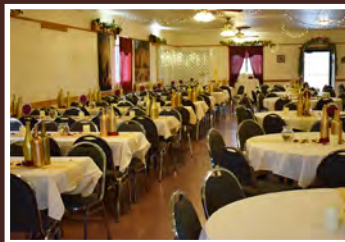
115 S. Main St.
620-234-5408

The Gathering Place

105 N. Main St.
620-234-5400



Winner of OVER 600 National and International Wine Medals!



Wyldewood Cellars Winery began with elderberries grown on the family ranch in Eastern Kansas. With Elderberries as our signature line we now have many varieties of fruit and berry wines, as well as grape wines, Meads, and Sangrias. Our wines range from the very dry to sweet, as well as fun wines like pure Jalapeño.

Our Elderberry Wines and Elderberry Concentrate are Kosher Certified and delicious. Homemade jellies to sample. Two Event Venues. Parking for self-contained RVs at our Flagship Winery and Paxico locations. Groups and Families welcome. Call to reserve Tours or Private Tasting Events. Family owned and operated, up to four generations at the Winery daily.



Flagship Winery

951 E 199th St S | Peck, KS 67120
M-Sa 9a-6p, Su 12p-5p | Direct: 316-554-9463
Just off Exit 33 of the Kansas Turnpike

Wichita Tasting Room

7130 W Maple #250 | Wichita, KS 67209
M-Sa 10a-6p, Su Closed | Direct: 316-686-9463
One Mile North of Eisenhower Ntnl Airport

Paxico Tasting Room

32633 Grapevine Rd | Paxico, KS 66526
M-Sa 10a-6p, Su 12p-5p | Direct: 785-652-9222
Just off Exit 333 of I-70

Order Online anytime at www.WyldewoodCellars.com



22nd Annual

AMELIA EARHART FESTIVAL

Atchison, KS | July 20 & 21



Downtown Fair • Food & Live Music • Children's Activities
Wagner's Carnival • Aerobatic Performances
Awards & Presentations • "Concert in the sky" Fireworks Finale

LAKEFEST JULY 20

Gates open at 4pm

Starring Brett Young

Featuring Maddie & Tae and A Thousand Horses

More info at 1-800-234-1854 or visitatchison.com



"The Most Haunted Town In Kansas"

Haunted Atchison Events

- Haunted Trolley Rides
- Murder Mystery Dinners
- Cemetery Walking Tours
- Paranormal Investigations
- Sallie House Tours
- Haunted Hop and more..



Official Haunted
Atchison

New this season..

Haunted Weekend with the NewKirks

Aiden Sinclair, Master Illusionist

Haunted 1889 McInteer Villa Tours

For the full Haunted Schedule, go to VisitAtchison.com



The Woodward Inns

on Fillmore

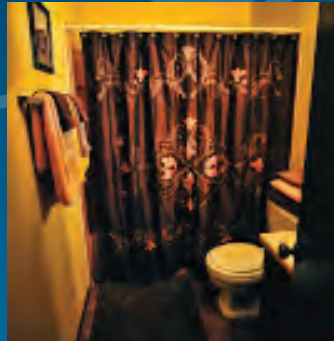
ONE GOTHIC MANSION + THREE STATELY EXECUTIVE INNS + THREE FAMILY INNS =
Topeka's Luxury Lodging/Party Destination Block



The Woodward
Row Houses on Huntoon
offer Luxury, Vintage Extended-Stay



The Woodward **Wistaria**
offers Moderate Adorable Extended-Stay



The Woodward Inns
offer Luxury Honeymoon Accommodations



Celebrating
25 Years



785-354-7111 • thewoodward.com